

Innovations in detail

Wall-Mounted

Motion Detect Sensor

With the Motion Detect Sensor (MDS) users can cool the home efficiently whether someone is there or not. If the sensor does not detect movement for 20 minutes¹ it automatically switches to WindFree™ mode to save energy. Subject to conditions, after 40 minutes the device increases the temperature by 2 °C in WindFree™ mode. After a further 40 minutes it enters standby (Soft off) mode. As soon as the air conditioning detects activity in the room it returns to working normally. It can also be set to avoid blowing air towards people, or alternatively to follow them as they move around.

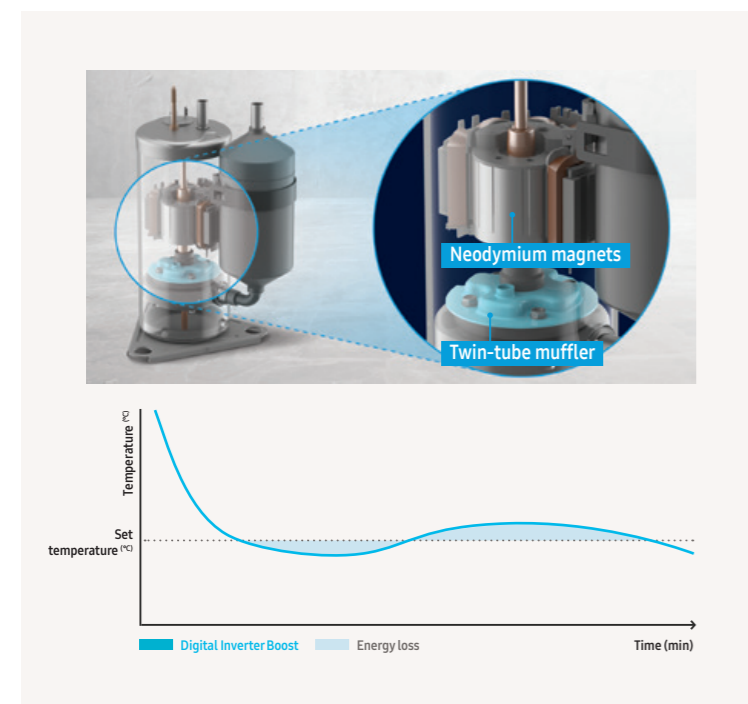
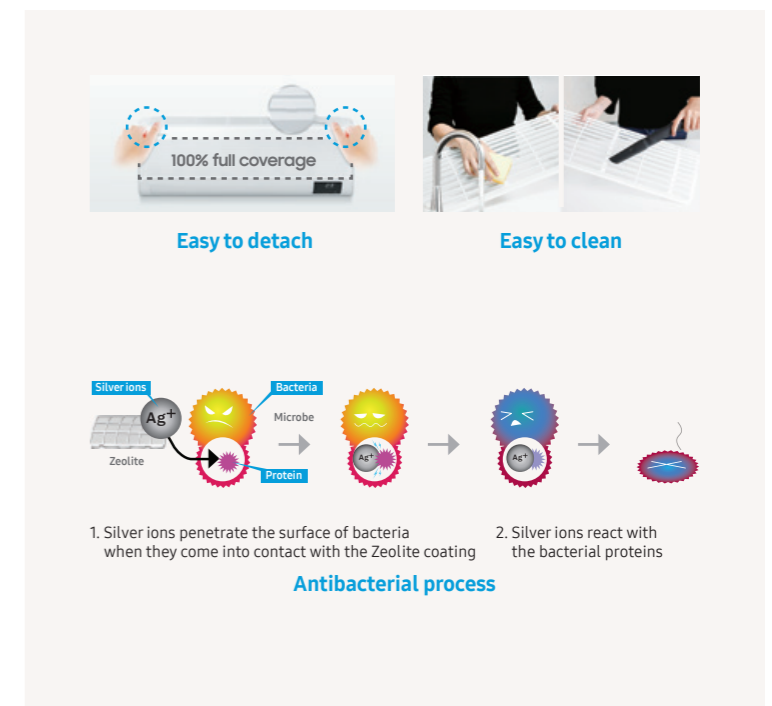
¹ The Motion Detect Sensor (MDS) starts detecting the absence of movement after a minimum of five minutes and up to a maximum of 60 minutes.



Easy Filter Plus

Unlike conventional filters that may be difficult to access the Easy Filter Plus is located externally on the top of the unit. This means it can be easily removed and cleaned without needing to open a cover or pull hard on it. Thanks to the filter's dense mesh it's very effective at capturing dust and therefore keeping the Heat Exchanger clean and working efficiently. The special coating on the filter helps protect residents from certain airborne contaminants¹.

¹ Tested in Korean test lab (FITI). Data has been measured under specific testing conditions and may vary depending on environmental factors and individual use. Certain airborne contaminants referred to are Escherichia coli ATCC 25922, Staphylococcus aureus ATCC 6538.

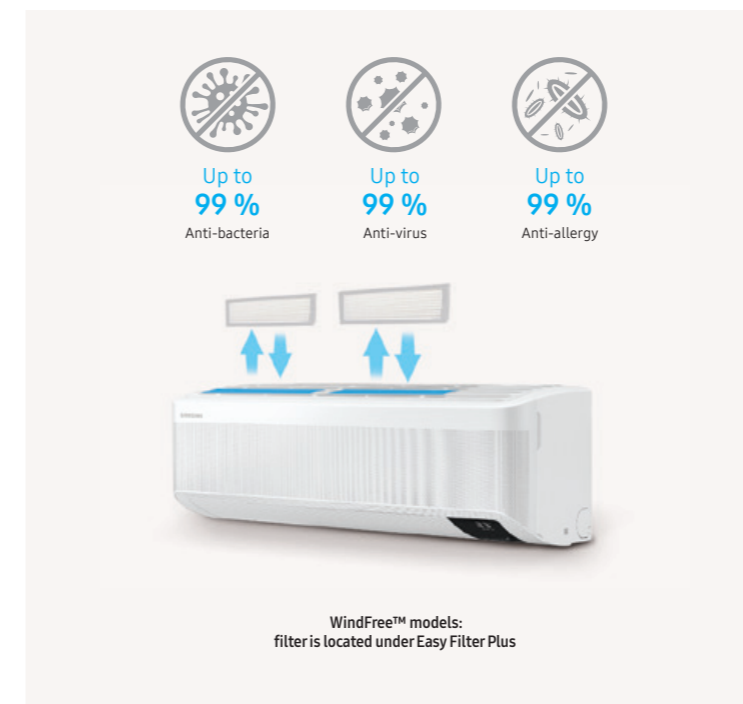


Not all features are available for all models.

Digital Inverter Boost

Samsung's compressor with Digital Inverter Boost technology helps to save on energy consumption. Unlike conventional fixed-speed compressors, it maintains the desired temperature without frequently turning off and on resulting in less fluctuation. As it's equipped with strong neodymium magnets and a muffler, it works efficiently and produces less noise and vibration than conventional models. When cooling it optimises power usage and therefore reduces energy consumption by up to 5 %¹.

¹ Tested on the AR09TXCAAWKNEU model compared with the previous Samsung WindFree™ model AR09NXCAAWKNEU.



Tri-Care Filter

The Tri-Care Filter¹ keeps the air hygienic and sustains the performance of the Heat Exchanger. Its three layers include a high-density filter that extracts large household dust particles, fibres and animal hair. It also has a filter with Zeolite coating that captures fine dust, and helps to reduce certain types of potentially dangerous viruses, bacteria and allergens in the air².

¹ The WindFree™ Pure 1.0 and WindFree™ Comfort do not come with the Tri-Care Filter.
² Verified by Intertek testing samples of Samsung AR9500T in a continuous airflow condition (to KS K 0693:2016 protocol using bacteriophage MS2 virus ATCC 15597-B1 and Escherichiacoli strain C3000 ATCC 15597) and antiviral Tri-Care Filter (to Samsung-defi ned test criteria using Staphylococcus aureus ATCC 6538 and Klebsiella pneumoniae ATCC 4352). Our products have not been tested for their effects on the COVID-19 virus. Therefore, we do not make or give any express or implied claims or guarantees with regard to COVID-19.

Not all features are available for all models.

Specifications

WindFree™ Elite R32

- Three-step cooling: Fast Cooling mode, Dehumidification mode and WindFree™ Cooling mode.
- Tri-Care Filter system with Zeolite Coating.
- AI Auto Comfort and Motion Detect Sensor.
- Wi-Fi Control with Samsung SmartThings and Bixby voice controls.
- Compressor with Digital Inverter Boost technology.
- Equipped with NASA communication protocol.
- Direct drive fan powered by a BLDC motor.
- Triple Protector Plus to protect compressor, fan and controller from power surges.
- Compatible with wired remote controller and with centralized controller.



Indoor Unit		AR09TXCAAWKNEU		AR12TXCAAWKNEU	
Outdoor Unit		AR09TXCAAWKXEU		AR12TXCAAWKXEU	
Capacity					
Capacity	Cooling (Nominal)	kW	2.5	3.5	
	Cooling (Min-Max)	kW	0.9-3.6	0.9-4.8	
	Heating @ +7 °C	kW	3.2	4.0	
	Heating (Min-Max)	kW	0.8-7.1	0.8-7.3	
	Heating @ -5 °C	kW	4.15	4.83	
	Heating @ -10 °C	kW	3.98	4.62	
	Heating @ -15 °C	kW	3.92	4.52	
Performance					
Energy Efficiency Cooling	SEER ¹	W/W	8.8/ A+++	8.5/ A+++	
	Power Consumption	kWh/a	99	144	
	Pdesignc	kW	2.5	3.5	
	EER	W/W	4.63	3.95	
Energy Efficiency Heating	SCOP ¹	W/W	5.1/ A+++	5.1/ A++	
	Power Consumption	kWh/a	631	659	
	Pdesignh (average)	kW	2.3	2.4	
	COP ¹	W/W	4.74	4.26	
Moisture Removal		l/h	1.0	1.5	
Maximum Airflow (Cooling)	Indoor Unit	m ³ /min	11.1	12.1	
	Outdoor Unit	m ³ /min	45.0	45.0	
Sound Power	Indoor Unit (Cooling)	dB(A)	56	58	
	Outdoor Unit (Cooling)	dB(A)	59	62	
Sound Pressure	Indoor Unit High/Silent Mode	dB(A)	39/16	40/16	
	Outdoor Unit High	dB(A)	45	46	
Operating Temperature Range	Cooling	°C	-10-46	-10-46	
	Heating	°C	-15-24	-15-24	
Electrical Data					
Power Source		Φ, V, Hz	1Φ, 220-240 V, 50 Hz	1Φ, 220-240 V, 50 Hz	
Compressor Type	Outdoor Unit	Type	BLDC Rotary	BLDC Rotary	
Power Consumption	Cooling	W	540	885	
	Heating	W	675	940	
Operating Current	Cooling	A	2.9	4.1	
	Heating	A	3.4	4.4	
Dimensions					
Net Dimensions (W x H x D)	Indoor Unit	mm	889 x 299 x 215	889 x 299 x 215	
	Outdoor Unit	mm	790 x 548 x 285	790 x 548 x 285	
Net Weight	Indoor Unit	kg	10.6	10.6	
	Outdoor Unit	kg	32.5	32.5	
Refrigerant					
Refrigerant	Type		R32 (contains fluorinated greenhouse gases. GWP = 675)		
	Charging (for 5 m)	kg	0.97	0.97	
	Charging Ton Equivalent CO ₂	tCO ₂ e	0.65	0.65	
	Additional Refrigerant Charging	g/m	15	15	
Piping Connections	Liquid Pipe	ø, mm (inch)	6.35 (1/4)	6.35 (1/4)	
	Gas Pipe	ø, mm (inch)	9.52 (3/8)	9.52 (3/8)	
Piping Length	Min/Max (ODU to IDU)	m	3/15	3/15	
Piping Height	Max	m	8	8	
Piping Connections	Drain Pipe	ø, mm	ø16.3, 550 mm	ø16.3, 550 mm	



Indoor Unit		AR09TXCAAWKNEU		AR12TXCAAWKNEU	
Outdoor Unit		AR09TXCAAWKXEU		AR12TXCAAWKXEU	
Functions					
Airflow	WindFree™ Cooling		●		●
	Air Direction Control (Up/Down)		Auto		Auto
	Air Direction Control (Left/Right)		Auto		Auto
	Auto Fan Speed		●		●
Air Purification	Tri-Care Filter		●		●
	Easy Filter Plus		●		●
	Auto Clean (Self-Cleaning)		●		●
Operating Mode	AI Auto Comfort with Wi-Fi & MDS (direct/indirect)		●		●
	AI Auto Comfort with Wi-Fi		●		●
	Auto Mode (without Wi-Fi)		-		-
	Fast Cooling		●		●
	Good Sleep		●		●
	Eco		●		●
	Dehumidification		●		●
	Fan		●		●
	Quiet		●		●
	Other Functions	Samsung SmartThings		●	
	MDS (Motion Detect Sensor)		●		●
	Indoor Temperature Display		●		●
	Display On/Off	88 Display	●		●
	Beep On/Off		●		●
	Auto Changeover		●		●
	Auto Restart		●		●

Accessory			
Wireless Remote Controller (included)	Advanced Wired Controller	Simple Type Controller	Touch Controller
	MWR-WG00JN/MWR-WG00KN	MWR-SH00N	MWR-SH11N

¹ Energy labels as shown are according to EU No 626/2011 (LOT10) label classification 2019, on a scale from D to A+++.

Specifications

WindFree™ Elite R32

- Three-step cooling: Fast Cooling mode, Dehumidification mode and WindFree™ Cooling mode.
- Tri-Care Filter system with Zeolite Coating.
- AI Auto Comfort and Motion Detect Sensor.
- Wi-Fi Control with Samsung SmartThings and Bixby voice controls.
- Compatible with wired remote controller and with centralized controller.



Indoor Unit			AR07TXCAAWKNEU	AR09TXCAAWKNEU	AR12TXCAAWKNEU
Capacity					
Capacity	Cooling	kW	2.0	2.5	3.5
	Heating @ +7 °C	kW	2.2	3.2	4.0
Performance					
Airflow Rate		m ³ /min	10.7	11.1	12.1
Sound Power	Cooling	dB(A)	56	56	58
Sound Pressure	H/L	dB(A)	37/19	39/16	40/16
Electrical Data					
Power Source		Φ, V, Hz	1Φ, 220-240 V, 50 Hz	1Φ, 220-240 V, 50 Hz	1Φ, 220-240 V, 50 Hz
Power Consumption	Cooling	W	40	40	40
	Heating	W	40	40	40
Current Input	Cooling	A	0.4	0.4	0.4
	Heating	A	0.4	0.4	0.4
Dimensions					
Net Dimensions (W x H x D)		mm	889 x 299 x 215	889 x 299 x 215	889 x 299 x 215
Net Weight		kg	10.3	10.3	10.3
Refrigerant					
Piping Connections	Liquid Pipe	ø, inch	1/4	1/4	1/4
	Gas Pipe	ø, inch	3/8	3/8	3/8
Piping Connections	Drain Pipe	ø, mm	ID 16	ID 16	ID 16



Indoor Unit			AR07TXCAAWKNEU	AR09TXCAAWKNEU	AR12TXCAAWKNEU
Functions					
Airflow	WindFree™ Cooling		●	●	●
	Air Direction Control (Up/Down)		Auto	Auto	Auto
	Air Direction Control (Left/Right)		Auto	Auto	Auto
	Auto Fan Speed		●	●	●
Air Purification	Tri-Care Filter		●	●	●
	Easy Filter Plus		●	●	●
	Auto Clean (Self-Cleaning)		●	●	●
Operating Mode	AI Auto Comfort with Wi-Fi & MDS (direct/indirect)		●	●	●
	AI Auto Comfort with Wi-Fi		●	●	●
	Auto Mode (without Wi-Fi)				
	Fast Cooling		●	●	●
	Good Sleep		●	●	●
	Eco		●	●	●
	Dehumidification		●	●	●
	Fan		●	●	●
Quiet		●	●	●	
Other Functions	Samsung SmartThings		●	●	●
	MDS (Motion Detect Sensor)		●	●	●
	Indoor Temperature Display	88 Display	●	●	●
	Display On/Off		●	●	●
	Beep On/Off		●	●	●
	Auto Changeover		●	●	●
Auto Restart		●	●	●	

Accessory



Wireless Remote Controller (included)	Advanced Wired Controller	Simple Type Controller	Touch Controller
	MWR-WG00JN/MWR-WG00KN	MWR-SH00N	MWR-SH11N