

# Commercial R32 SLIM DUCT LOW PRESSURE



**THE PANEL KIT (OPTIONAL) INCLUDES:**

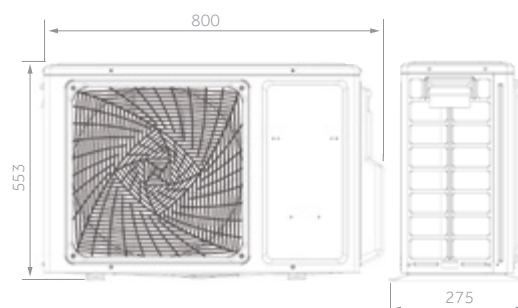
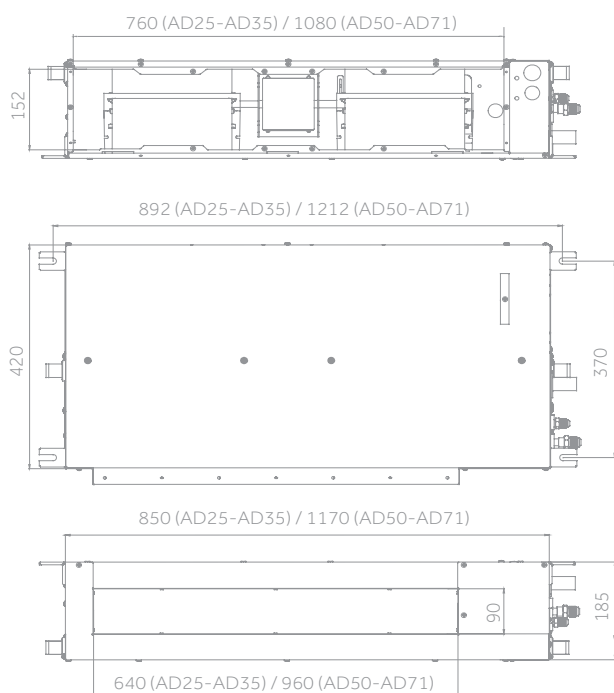
Air supply grill equipped with vertical and horizontal fins motorised 3D effect - receiver - display

Air intake grill equipped with filter

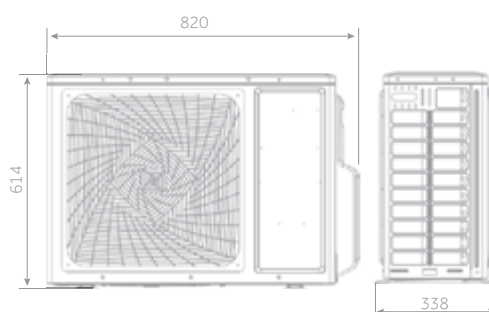


AD35 - AD50 - AD71

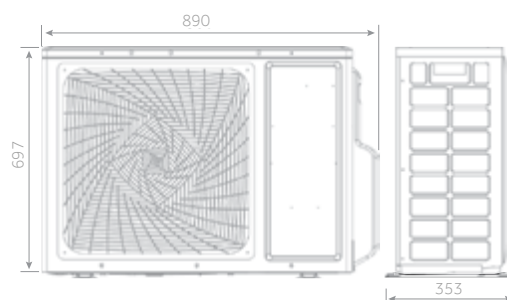
1U35



1U50



1U71



3,5 kW

5,0 kW

7,1 kW

# Commercial R32 SLIM DUCT LOW PRESSURE

Haier

3,5 kW

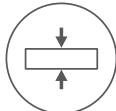
5,0 kW

7,1 kW

OPTIONAL CONTROL



Silence



Compact Design



3D



Condensate  
Drain Pump



Flexible  
Installation

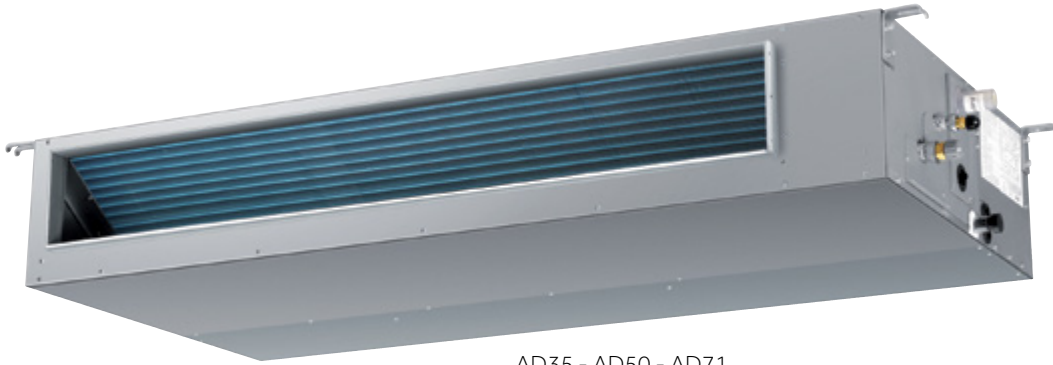


AD71S2SS1FA

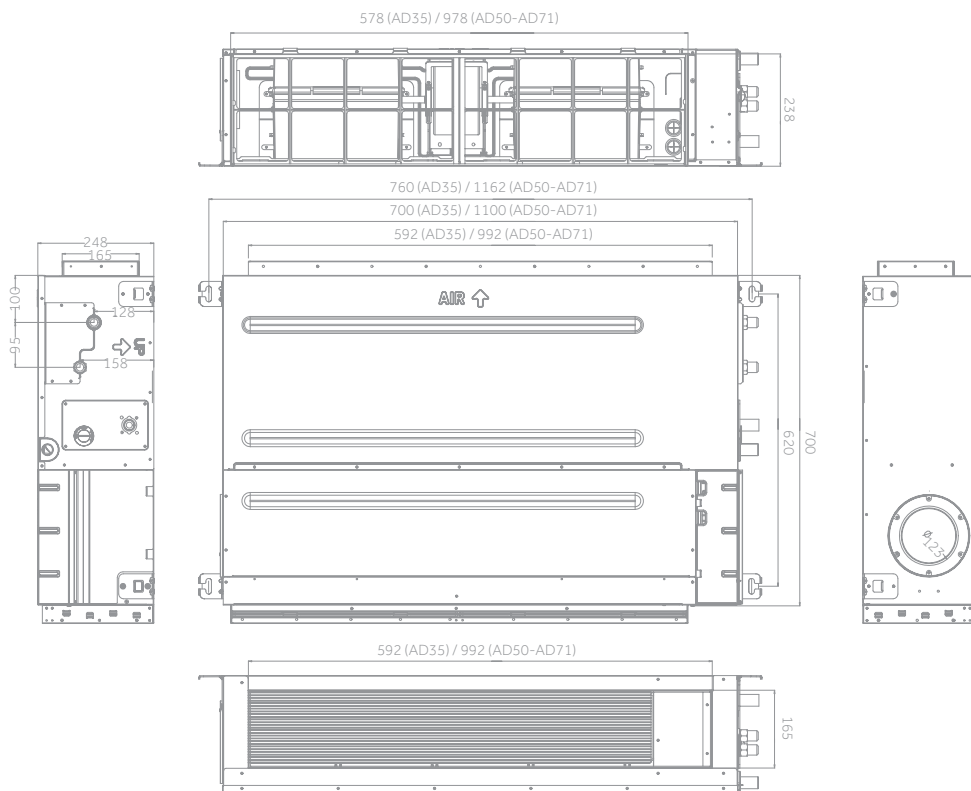
- Low noise level
- Compact design
- Panel kit (OPTIONAL): air supply and intake grill
- Condensate drain pump
- Flexible installation

Indoor Unit	Model		AD35S2SS1FA	AD50S2SS1FA	AD71S2SS1FA
Outdoor Unit	Model		1U35S2SM1FA	1U50S2S2FA	1U71S2SR2FA
<b>Performance data</b>					
Output power - COOLING	nom (min-max)	kW	3,50 (0,90-4,50)	5,00 (1,80-6,00)	7,10 (2,00-7,60)
Output power - HEATING	nom (min-max)	kW	4,00 (1,00-4,80)	5,50 (2,00-6,20)	7,50 (3,00-8,30)
Absorbed power - COOLING	nom (min-max)	kW	1,06 (0,28-1,80)	1,53 (0,55-2,10)	2,20 (0,50-3,00)
Absorbed power - HEATING	nom (min-max)	kW	1,07 (0,28-1,80)	1,47 (0,60-2,10)	2,01 (0,60-2,90)
Energy class	EER	W/W	3,30	3,26	3,24
	COP	W/W	3,73	3,73	3,73
COOLING Pdesign	35 °C	kW	3,50	5,00	7,10
HEATING Pdesign	(-10 °C)	kW	3,00	4,30	5,00
Energy class	SEER		6,10 (A++)	6,10 (A++)	6,10 (A++)
	SCOP		3,80 (A)	3,80 (A)	3,80 (A)
Annual Energy Consumption - COOLING		kWh/a	241	315	406
Annual Energy Consumption - HEATING		kWh/a	1427	1961	1836
<b>Indoor Unit</b>					
Power supply		Ph/V/Hz	1/220-240/50/60	1/220-240/50/60	1/220-240/50/60
Treated air volume	(H/M/L/Q)	m3/h	600/480/420/350	900/750/600	1000/850/750
External static pressure		Pa	0/10/20/40		
High sound power		dB	53	54	57
Sound pressure		dB(A)	33/28/25	36/34/32	49/46/44/42
Net dimensions	WxDxH	mm	850x420x185	1170x420x185	1170x420x185
Packaging dimensions	WxDxH	mm	1045x530x260	1365x530x260	1365x530x260
Net/gross weight		kg	16,0/21,0	22,0/28,0	25,2/28,4
Panel (optional)	Model		P1B-890IA/D	P1B-1210IA/D	P1B-1210IA/D
Panel Net dimensions			890x190x100(outlet panel) 890x290,5x32,4(inlet panel)	1210x190x100(outlet panel) 1210x290,5x32,4(inlet panel)	
Panel Packaging dimensions			938x335x220	1258x335x220	1258x335x220
Panel Net/gross weight			4,0/5,0	5,0/6,0	5,0/6,0
<b>Outdoor Unit</b>					
Power supply		Ph/V/Hz	1/220-240/50	1/220-240/50	1/220-240/50/60
Power cable		N x mm2	3 x 1,5	3 x 1,5	3 x 4,0
Interconnection cable		N x mm2	4 x 1,0	4 x 1,0	4 x 2,5
Sound power	H	dB	61	63	67
Sound pressure	H	dB(A)	48	51	54
Running current cooling/heating	Max	A	8,0	9,5	13,1
Starting current cooling/heating	Max	A	2,0	2,0	2,0
Net dimensions	WxDxH	mm	800x275x553	820x338x614	890x353x697
Packaging dimensions	WxDxH	mm	908x405x625	993x413x685	1046x460x780
Net/gross weight		kg	30,0/32,9	37,8/41,5	45,0/50,0
Compressor type			Rotary inverter	Twin rotary inverter	Twin rotary inverter
<b>Installation data</b>					
Refrigerant			R32	R32	R32
Liquid pipe	∅	mm (inch)	6,35 (1/4)	6,35 (1/4)	9,52 (3/8)
Gas pipe	∅	mm (inch)	9,52 (3/8)	12,70 (1/2)	15,88 (5/8)
Standard pipe length without refrigerant charge		m	7	7	10
Maximum pipe length		m	15	25	50
Maximum IU - OU elevation		m	10	15	30
Refrigerant charge in the factory		kg	0,78	0,95	1,30
Refrigerant charge in the factory		T CO2eq	0,53	0,64	0,88
Additional ref. charge over std length		g/m	20	20	45
Outdoor operating limits - COOLING	min-max	°C		-10-46	
Outdoor operating limits - HEATING	min-max	°C		-15-24	

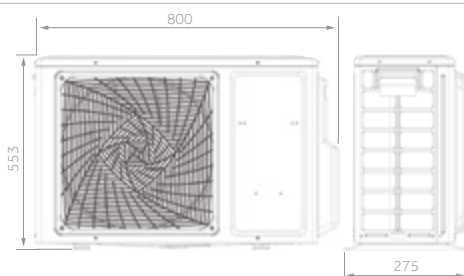
# Commercial R32 DUCTED MEDIUM PRESSURE



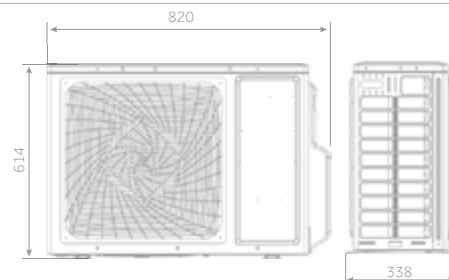
AD35 - AD50 - AD71



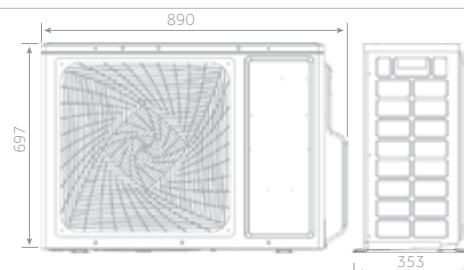
1U35



1U50



1U71



3,5 kW

5,0 kW

7,1 kW

# Commercial R32 DUCTED MEDIUM PRESSURE

Haier

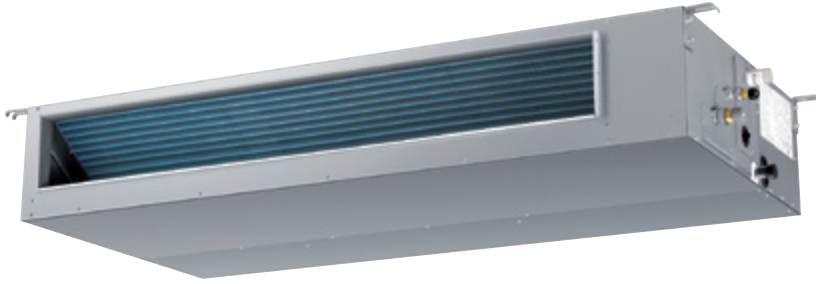
3,5 kW

5,0 kW

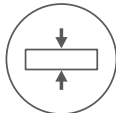
7,1 kW

OPTIONAL CONTROL

COMMERCIAL R32



Silence



Compact Design



Fresh Air



Condensate  
Drain Pump



Flexible  
Installation



Wi-Fi Optional



AD71S2SM3FA

- Low noise level
- Compact design
- 'Fresh air' knockout is incorporated in the chassis to allow fresh air introduction of up to 20% of nominal unit air flow without compromising the cooling capacity. More than 20% of the air conditioner's thermal cooling capacity is penalise.
- Condensate drain pump

Indoor Unit	Model		AD105S2SM3FA	AD105S2SM3FA	AD125S2SM3FA	AD125S2SM3FA
Outdoor Unit	Model		1U105S2SS2FA	1U105S2SS1FB	1U125S2SN2FA	1U125S2SN2FB
<b>Performance data</b>						
Output power - COOLING	nom (min-max)	kW	9,50 (2,50-10,00)	9,50 (2,50-10,00)	12,30 (3,00-13,00)	12,40 (3,00-13,00)
Output power - HEATING	nom (min-max)	kW	10,20 (3,00-10,50)	10,50 (3,00-11,00)	12,70 (3,50-13,50)	12,80 (3,50-13,50)
Absorbed power - COOLING	nom (min-max)	kW	3,16 (0,50-4,00)	3,27 (0,50-4,00)	4,60 (1,00-6,00)	4,51 (1,00-6,00)
Absorbed power - HEATING	nom (min-max)	kW	2,91 (0,50-4,00)	3,00 (0,50-4,00)	3,93 (1,00-6,00)	3,87 (1,00-6,00)
Energy class	EER	W/W	3,01	2,90	2,67	2,75
	COP	W/W	3,50	3,50	3,23	3,31
COOLING Pdesign	35 °C	kW	9,50	9,50	12,30	12,40
HEATING Pdesign	(-10 °C)	kW	7,20	6,00	8,00	8,00
Energy class	SEER		6,10 (A++)	6,00 (A+)	5,72 (A+)	5,85 (A+)
	SCOP		3,80 (A)	3,91 (A)	3,93 (A)	3,96 (A)
Annual Energy Consumption - COOLING		kWh/a	544	569	735	718
Annual Energy Consumption - HEATING		kWh/a	2792	2094	3032	3003
<b>Indoor Unit</b>						
Power supply		Ph/V/Hz	1/220-240/50/60	1/220-240/50/60	1/220-240/50/60	1/220-240/50/60
Treated air volume	(H/M/L/Q)	m <sup>3</sup> /h	1600/1480/1360/1240	1600/1480/1360/1240	2250/1960/1680/1500	2250/1960/1680/1500
External static pressure		Pa	25/37(default)/50/70/90/100/110/120/130/150			
High sound power		dB	61	64	65	65
Sound pressure		dB(A)	47/44/40/37	47/44/40/37	48/45/42/39	48/45/42/39
Net dimensions	WxDxH	mm	1500x700x248	1500x700x248	1500x700x248	1500x700x248
Packaging dimensions	WxDxH	mm	1711x870x325	1711x870x325	1711x870x325	1711x870x325
Net/gross weight		kg	46,0/55,0	46,0/55,0	52,0/62,0	52,0/62,0
<b>Outdoor Unit</b>						
Power supply		Ph/V/Hz	1/220-240/50/60	3/380-415/50/60	1/220-240/50/60	3/380-415/50/60
Power cable		N x mm <sup>2</sup>	3 x 4,0	5 x 4,0	3 x 6,0	5 x 4,0
Interconnection cable		N x mm <sup>2</sup>	4 x 2,5	4 x 2,5	4 x 2,5	4 x 2,5
Sound power	H	dB	66	68	72	72
Sound pressure	H	dB(A)	53	54	58	58
Running current cooling/heating	Max	A	16,5	6,8	26,0	10,0
Starting current cooling/heating	Max	A	3,0	1,0	4,0	2,0
Net dimensions	WxDxH	mm	920*372*760	920*372*760	950x370x965	950x370x965
Packaging dimensions	WxDxH	mm	1036*478*820	1085x485x830	1050x485x1130	1050x485x1130
Net/gross weight		kg	60,0/65,0	61,0/66,0	84,0/89,0	85,0/90,0
Compressor type			Twin rotary inverter	Twin rotary inverter	Twin rotary inverter	Twin rotary inverter
<b>Installation data</b>						
Refrigerant			R32	R32	R32	R32
Liquid pipe	∅	mm (inch)	9,52 (3/8)	9,52 (3/8)	9,52 (3/8)	9,52 (3/8)
Gas pipe	∅	mm (inch)	15,88 (5/8)	15,88 (5/8)	15,88 (5/8)	15,88 (5/8)
Standard pipe length without refrigerant charge		m	30	30	30	30
Maximum pipe length		m	50	50	50	50
Maximum IU - OU elevation		m	30	30	30	30
Refrigerant charge in the factory		kg	1,70	1,70	2,30	2,30
Refrigerant charge in the factory		TCO <sub>2</sub> eq	1,15	1,15	1,55	1,55
Additional ref. charge over std length		g/m	45	45	45	45
Outdoor operating limits - COOLING	min-max	°C	-10-46			
Outdoor operating limits - HEATING	min-max	°C	-15-24			

# Commercial R32 DUCTED MEDIUM PRESSURE

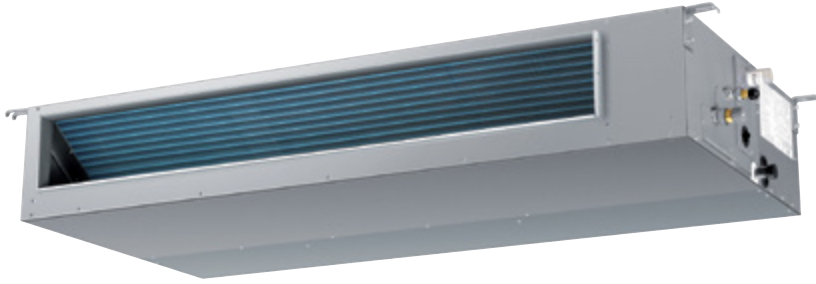
Haier

14,0 kW

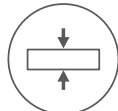
16,0 kW

OPTIONAL CONTROL

COMMERCIAL R32



Silence



Compact Design



Fresh Air



Condensate  
Drain Pump



Flexible  
Installation



Wi-Fi Optional



- Low noise level
- Compact design
- 'Fresh air' knockout is incorporated in the chassis to allow fresh air introduction of up to 20% of nominal unit air flow without compromising the cooling capacity. More than 20% of the air conditioner's thermal cooling capacity is penalise.
- Condensate drain pump

Indoor Unit	Model		AD140S2SM3FA	AD140S2SM3FA	AD140S2SM3FA	AD140S2SM3FA	AD160S2SM3FA	
Outdoor Unit	Model		1U140S2SN1FA	1U140S2SN1FB	1U140S2SP2FA	1U140S2SP2FB	1U160S2SP1FB	
<b>Performance data</b>								
Output power - COOLING	nom (min-max)	kW	13,40 (3,50-14,00)	13,40 (3,50-14,00)	13,40 (4,00-15,00)	13,40 (4,00-15,00)	16,00 (4,50-16,50)	
Output power - HEATING	nom (min-max)	kW	15,00 (4,00-15,50)	15,00 (4,00-15,50)	15,00 (4,50-16,00)	15,00 (4,50-16,00)	17,00 (5,00-18,00)	
Absorbed power - COOLING	nom (min-max)	kW	5,28 (1,00-6,50)	5,18 (1,00-6,50)	4,17 (1,00-6,00)	4,15 (1,00-6,00)	5,48 (1,00-6,50)	
Absorbed power - HEATING	nom (min-max)	kW	4,92 (1,00-6,50)	4,79 (1,00-6,50)	4,04 (1,00-6,00)	4,02 (1,00-6,00)	4,82 (1,00-6,50)	
Energy class	EER	W/W	2,54	2,59	3,21	3,23	2,92	
	COP	W/W	3,05	3,13	3,71	3,73	3,53	
COOLING Pdesign	35 °C	kW	13,40	13,40	13,40	13,40	16,00	
HEATING Pdesign	(-10 °C)	kW	8,50	8,50	11,00	11,00	11,00	
Energy class	SEER		5,62 (A+)	5,64 (A+)	6,16 (A++)	6,19 (A++)	5,94 (A+)	
	SCOP		3,93 (A)	3,96 (A)	4,06 (A+)	4,06 (A+)	4,06 (A+)	
Annual Energy Consumption - COOLING		kWh/a	835	832	761	758	943	
Annual Energy Consumption - HEATING		kWh/a	3032	3003	3796	3798	3798	
<b>Indoor Unit</b>								
Power supply		Ph/V/Hz	1/220-240/50/60	1/220-240/50/60	1/220-240/50/60	1/220-240/50/60	1/220-240/50/60	
Treated air volume	(H/M/L/Q)	m <sup>3</sup> /h	2500/2160/1780/1500	2500/2160/1780/1500	2500/2160/1780/1500	2500/2160/1780/1500	2500/2160/1780/1500	
External static pressure		Pa	25/37(default)/50/70/90/100/110/120/130/150					
High sound power		dB	66	66	66	66	67	
Sound pressure		dB(A)	48/45/42/39	48/45/42/39	48/45/42/39	48/45/42/39	48/45/42/39	
Net dimensions	WxDxH	mm	1500x700x248	1500x700x248	1500x700x248	1500x700x248	1500x700x248	
Packaging dimensions	WxDxH	mm	1711x870x325	1711x870x325	1711x870x325	1711x870x325	1711x870x325	
Net/gross weight		kg	52,0/62,0	52,0/62,0	52,0/62,0	52,0/62,0	48,0/57,0	
<b>Outdoor Unit</b>								
Power supply		Ph/V/Hz	1/220-240/50/60	3/380-415/50/60	1/220-240/50/60	3/380-415/50/60	3/380-415/50/60	
Power cable		N x mm <sup>2</sup>	3 x 6,0	5 x 4,0	3 x 6,0	5 x 4,0	5 x 4,0	
Interconnection cable		N x mm <sup>2</sup>	4 x 2,5	4 x 2,5	4 x 2,5	4 x 2,5	4 x 2,5	
Sound power	H	dB	72	72	70	70	72	
Sound pressure	H	dB(A)	58	58	53	53	58	
Running current cooling/heating	Max	A	30,0	10,0	32,0	10,0	10,0	
Starting current cooling/heating	Max	A	5,0	2,0	6,0	2,0	2,0	
Net dimensions	WxDxH	mm	950x370x965	950x370x965	950x370x1350	950x370x1350	950x370x1350	
Packaging dimensions	WxDxH	mm	1050x485x1130	1050x485x1130	1050x485x1500	1050x485x1500	1050x485x1500	
Net/gross weight		kg	84,0/89,0	85,0/90,0	105,0/118,0	101,0/116,0	101,0/116,0	
Compressor type			Twin rotary inverter	Twin rotary inverter	Twin rotary inverter	Twin rotary inverter	Twin rotary inverter	
<b>Installation data</b>								
Refrigerant			R32	R32	R32	R32	R32	
Liquid pipe	∅	mm (inch)	9,52 (3/8)	9,52 (3/8)	9,52 (3/8)	9,52 (3/8)	9,52 (3/8)	
Gas pipe	∅	mm (inch)	15,88 (5/8)	15,88 (5/8)	15,88 (5/8)	15,88 (5/8)	19,05 (3/4)	
Standard pipe length without refrigerant charge		m	30	30	30	30	30	
Maximum pipe length		m	70	70	70	70	70	
Maximum IU - OU elevation		m	30	30	30	30	30	
Refrigerant charge in the factory		kg	2,30	2,30	2,90	3,50	3,50	
Refrigerant charge in the factory		TCO <sub>2</sub> eq	1,55	1,55	1,96	2,36	2,36	
Additional ref. charge over std length		g/m	45	45	45	45	45	
Outdoor operating limits - COOLING	min-max	°C	-10-46					
Outdoor operating limits - HEATING	min-max	°C	-15-24					