

CASSETTE Y

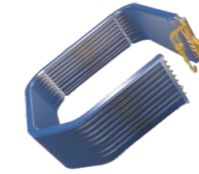
Free-Match & Light Commercial



Feature

► 5-fold exchanger

The evaporator adopts a 5-fold evaporator, which has a larger heat exchange area and a 12% increase in heat exchange efficiency compared to traditional 4-fold evaporators.



► Round-way air supply

Round flow panel make the air diffuse from 360° direction, and the temperature distribution is more uniform.



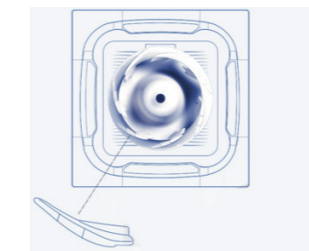
► long distance air supply

The air supply distance reaches 4m, meeting the air supply requirements for tall spaces.



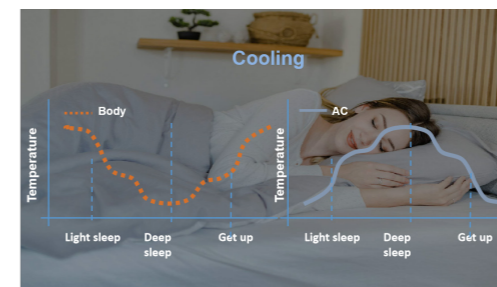
► Big air volume

Adopting a large-diameter spiral wind wheel for larger air volume and lower noise.



► Sleeping mode

Turn on sleep mode at night, no need to worry about being too cold or too hot, and sleep comfortably all night long.



► Central control function

Optional dry node function, when the unit senses the window opening or sensing the fire, the unit will automatically shut down.



Feature

► Screen display function

When the unit is running, the light panel icon can be set to display or not to display to meet the needs of different customers.



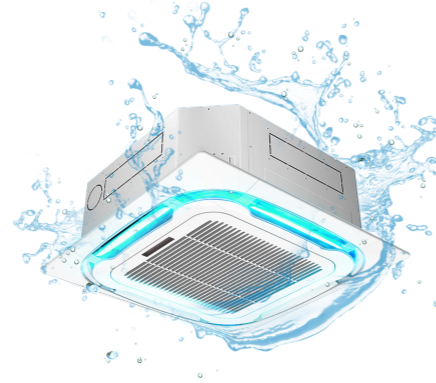
► Fresh air

And long-term use will not cause dizziness, healthy and comfortable.



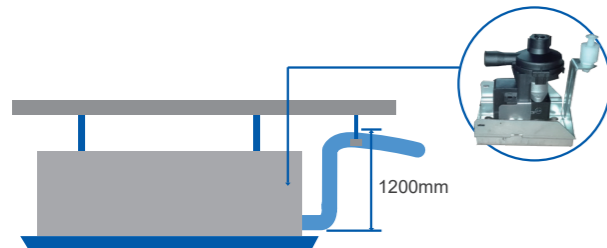
► Auto clean

Automatic cleaning of evaporator, cleaning of dust and dirt, healthy and comfortable.



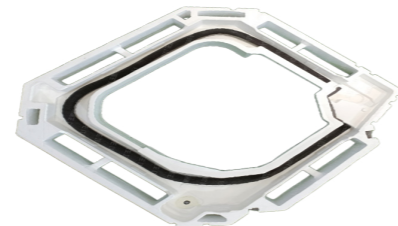
► Built-in Drain Pump

Built in drainage pump with a lift of up to 1200mm, suitable for more installation occasions and more efficient drainage.



► Anti-leakage water pan

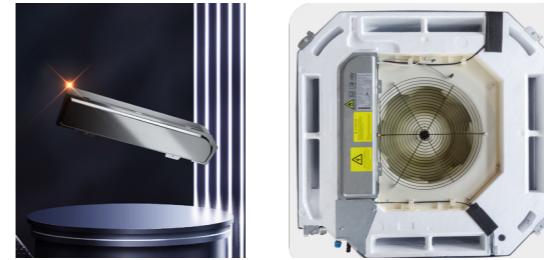
Using 1.5mm thick plastic drain pan, with high waterproof performance and effective prevention of water seepage.



Feature

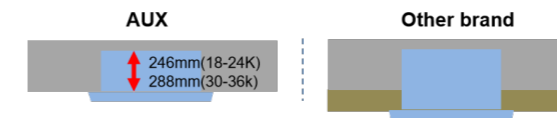
► Fire-proof covercover

The fireproof electric control box made of metal materials has higher safety, ensuring the safe operation of the unit.



► Compact body size

The thickness of the body is 246mm, occupying less ceiling space and making installation more convenient.



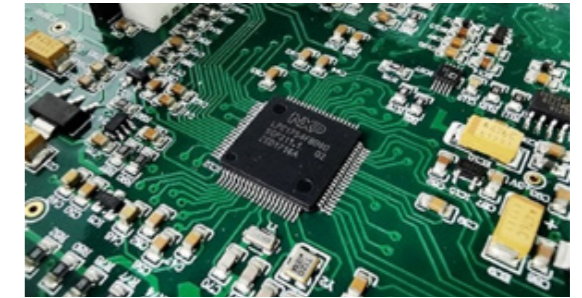
► Wifi room card

Optional WiFi, room card, and centralized control functions to meet intelligent needs.



► Reliable control board

Hot melt adhesive is applied around the electronic components to keep the components stable.



► Removable grille

No need for tools, just press lightly to open the grille, making installation more convenient.



► Weekly timer

Set the operating time of the unit in one week, without having to manually turn it on every time, and no need to worry about forget to turn off the unit after getting off work.



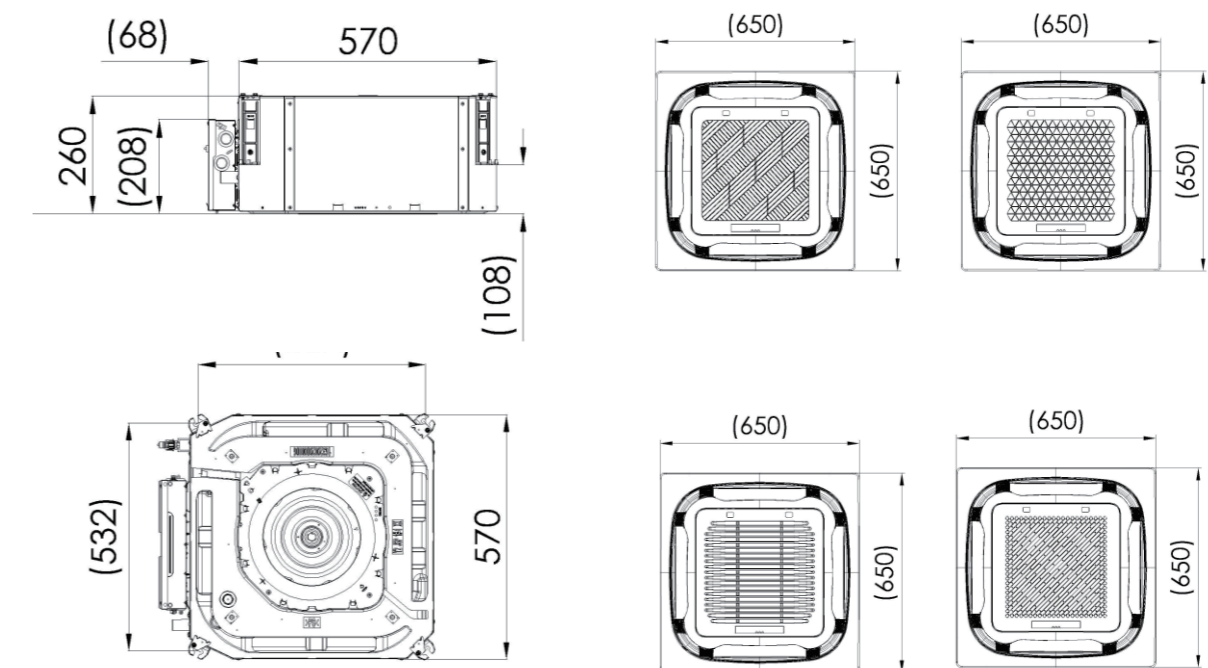
Specification-Free Match

Model	Indoor		AUCA-H09/4DR3HYAB	AUCA-H12/4DR3HYAB
Capacity	Cooling	Btu/h	9560(5120-12115)	12010(5800-12625)
		kW	2.80(1.50-3.55)	3.52(1.70-3.70)
Capacity	Heating	Btu/h	10240(5460-13000)	13000(6930-15080)
		kW	3.00(1.60-3.81)	3.81(2.03-4.42)
Electric Data	Power Supply	V~,Hz,Ph	220-240,50,1	220-240,50,1
	Cooling Power Input	W	40(12 ~ 68)	40(12 ~ 68)
	Heating Power Input	W	40(12 ~ 68)	40(12 ~ 68)
Performance	Air Flow Volume	m3/h	700/620/530	700/620/530
	Sound Pressure Level	dB(A)	42/36/32	42/36/32
	Sound Power Level	dB(A)	52	52
Dimension	Net Dim (W*D*H)	mm	570×570×260	570×570×260
	Packing Dim (W*D*H)	mm	720×650×290	720×650×290
	Net(Panel)	mm	650×650×55	650×650×55
	Packing(Panel)	mm	710×710×80	710×710×80
Weight	Net/Gross(Body)	kg	14.5/17	14.5/17
	Net/Gross(Panel)	kg	2.2/3.7	2.2/3.7
Pipe Dia	Liquid Side	mm(inch)	6.35(1/4)	6.35(1/4)
	Gas Side	mm(inch)	12.7(1/2)	12.7(1/2)
	Drainage	mm	20	20
Loading Qty	20/40/40H	unit	235/470/537	235/470/537

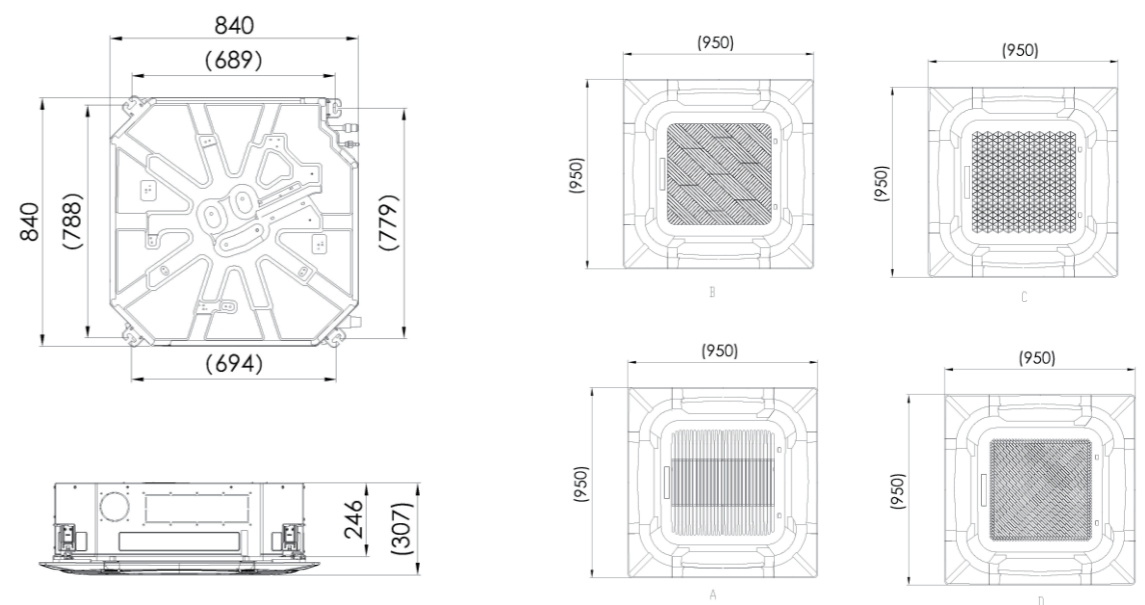
Model	Indoor		AUCA-H18/4DR3HYAB	AUCA-H24/4DR3HYAB
Capacity	Cooling	Btu/h	18015(8530-19107)	24000(7400-28000)
		kW	5.28(2.50-5.6)	7.00(2.16-8.20)
Capacity	Heating	Btu/h	19107(10340-24000)	27300(6800-31700)
		kW	5.60(3.03-7.03)	8.00(1.98-9.30)
Electric Data	Power Supply	V~,Hz,Ph	220-240,50,1	220-240,50,1
	Cooling Power Input	W	40(12 ~ 68)	110(27.5-171)
	Heating Power Input	W	40(12 ~ 68)	110(27.5-171)
Performance	Air Flow Volume	m3/h	760/650/580	1400/1350/1150
	Sound Pressure Level	dB(A)	45/40/38	47/45/42
	Sound Power Level	dB(A)	56	57
Dimension	Net Dim (W*D*H)	mm	570×570×260	840×840×246
	Packing Dim (W*D*H)	mm	720×650×290	910×910×310
	Net(Panel)	mm	650×650×55	950×950×55
	Packing(Panel)	mm	710×710×80	1000×1000×100
Weight	Net/Gross(Body)	kg	15/17.5	26/30
	Net/Gross(Panel)	kg	2.2/3.7	5.3/7.8
Pipe Dia	Liquid Side	mm(inch)	6.35(1/4)	6.35(1/4)
	Gas Side	mm(inch)	12.7(1/2)	15.88(5/8)
	Drainage	mm	20	20
Loading Qty	20/40/40H	unit	235/470/537	36/76/86

Dimension-Free Match

AUCA-H09/4DR3HYAB AUCA-H12/4DR3HYAB AUCA-H18/4DR3HYAB



AUCA-H24/4DR3HYAB



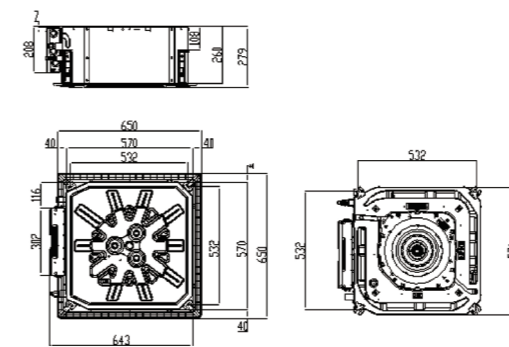
Specification-Light Commercial

Model	Indoor	AUCA-H12/4DR3HYAB	AUCA-H18/4DR3HYAB	AUCA-H24/4DR3HYAB	
IDU Power Supply	V~,Hz,Ph	220-240/50&60/1	220-240/50&60/1	220-240/50&60/1	
Capacity	Cooling	Btu/h KW	12000(4600-15000) 3.52(1.35-4.40)	18000(5200-19100) 5.28(1.53-5.60)	24000(7400-28000) 7.03(2.16-8.20)
	Heating	Btu/h KW	13000 (4200~18100) 3.81(1.24~5.30)	19100(4800~21200) 5.60(1.40~6.20)	27300(6800~31700) 7.91(1.98~9.30)
Electric Data	Rated Cooling Power Input	KW	1.03(0.26~1.60)	1.55(0.47~2.30)	2.10(0.67~3.30)
	Rated Heating Power Input	KW	1.02(0.19~1.51)	1.51(0.46~2.25)	2.13(0.65~3.30)
	Rated Cooling Current	A	4.48(1.13~6.96)	6.74(2.04~10.00)	9.13(2.91~14.35)
	Rated Heating Current	A	4.43(0.83~6.57)	6.57(2.00~9.78)	9.26(2.83~14.35)
Performance	EER/COP	W/W	3.41/3.73	3.41/3.71	3.35/3.71
	SEER/SCOP	W/W	6.1/4.0	6.1/4.0	6.1/4.0
Indoor Unit	Air Flow	m3/h	700/620/530	760/650/580	1500/1350/1200
	Sound Pressure Noise	dB(A)	42/38/35	44/41/38	46.5/45/43
	Sound Power Noise Level	dB(A)	52	56	56
	Net Dimension (W*D*H)	mm	570×570×260	570×570×260	840×840×246
	Packing Dimension (W*D*H)	mm	720×650×290	720×650×290	910×910×310
Refrigerant Pipe	Liquid Side	mm	6.35(1/4)	6.35(1/4)	9.52(3/8)
	Gas Side	mm	12.7(1/2)	12.7(1/2)	15.88(5/8)
	Drainage	mm	R3/4in(DN20)	R3/4in(DN20)	R3/4in(DN20)
Wired/Remote Controller		YKR-L/300-HYE	YKR-L/300-HYE	YKR-L/300-HYE	
Stuffing Quantity	20/40/40H	unit	216/432/486	216/432/486	84/182/208

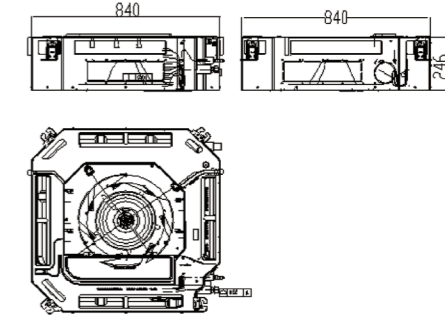
Model	Indoor	AUCA-H36/NDR3HYCB	AUCA-H42/NDR3HYCB	AUCA-H48/SDR3HYCB	AUCA-H60/SDR3HYCB	
IDU Power Supply	V~,Hz,Ph	220-240/50/1	220-240/50/1	220-240/50&60/1	220-240/50&60/1	
Capacity	Cooling	Btu/h KW	36265(8490-41250) 10.55(2.47~12.00)	41593(8490-45134) 12.10(2.47~13.13)	48000(16241-49474) 14.00(4.76-14.5)	55000(16241-59710) 16.00(4.76-17.5)
	Heating	Btu/h KW	38328(5534-42556) 11.15(1.61~12.38)	46406(5534-49843) 13.50(1.61~14.50)	55000(16309-59028) 16.00(4.78-17.3)	58000(16308-63122) 17.00(4.78-18.50)
Electric Data	Rated Cooling Power Input	KW	3.10(0.23~3.63)	3.90(0.23~4.30)	4.65(1.71-5.90)	5.25(1.71-6.85)
	Rated Heating Power Input	KW	2.80(0.29~3.11)	3.80(0.29~4.00)	4.58(1.71-6.05)	5.05(1.71-7.00)
	Rated Cooling Current	A	14.00(1.80~25.00)	17.50(1.80~25.00)	8.10(1.50-12.00)	9.00(1.50-12.00)
	Rated Heating Current	A	13.00(1.80~25.00)	17.00(1.80~25.00)	8.00(1.50-12.00)	8.50(1.50-12.00)
Performance	EER/COP	W/W	3.40/3.98	3.10/3.55	3.01/3.49	3.05/3.37
	SEER/SCOP	W/W	6.1/4.0	/	/	/
Indoor Unit	Air Flow (Hi/Mi/Lo)	m3/h CFM	2000/1700/1600 1176/1000/941	2000/1700/1600 1176/1000/941	2000/1700/1600 1176/1000/941	2000/1700/1600 1176/1000/941
	Sound Pressure Noise(Hi/Mi/Lo)	dB(A)	52/50/48	52/50/48	51/49/47	53/49/47
	Sound Power Noise Level	dB(A)	62	62	62	62
	Net Dimension (W*D*H)	mm	840×840×288	840×840×288	840×840×288	840×840×288
	Packing Dimension (W*D*H)	mm	910×910×350	910×910×350	910×910×350	910×910×350
	Net Weight	Kg	29.5	29.5	29.5	29.5
	Gross Weight	Kg	33.5	33.5	33.5	33.5
Refrigerant Pipe	Liquid Side	mm	9.52(3/8)	9.52(3/8)	9.52(3/8)	9.52(3/8)
	Gas Side	mm	15.88(5/8)	15.88(5/8)	15.88(5/8)	15.88(5/8)
	Drainage	mm	R3/4in(DN20)	R3/4in(DN20)	R3/4in(DN20)	R3/4in(DN20)
Wired/Remote Controller		YKR-L/300-HYE	YKR-L/300-HYE	YKR-L/300-HYE	YKR-L/300-HYE	
Stuffing Quantity	20/40/40H	Set	44/96/96	44/96/96	27/54/54	27/54/54

Dimension-Light Commercial

AUCA-H12/4DR3HYAB AUCA-H18/4DR3HYAB



AUCA-H24/4DR3HYAB



AUCA-H36/NDR3HYCB AUCA-H42/NDR3HYCB
AUCA-H48/SDR3HYCB AUCA-H60/SDR3HYCB

