

# Technical Data Sheet

CODE 42263

## MPC-E 254 M

Medium-pressure long cased axial fans



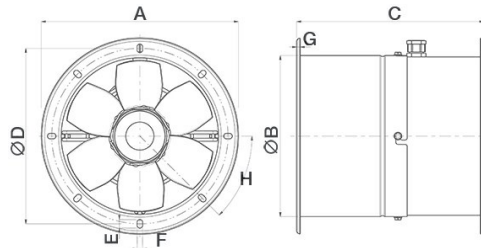
### Certifications



### TECHNICAL AND PERFORMANCE DATA

Absorbed Current max (A)	0,32	Number of Poles	4
Absorbed Power max (W)	70	Voltage (V)	230
Frequency (Hz)	50	Weight (Kg)	8,2
Insulation Class	I°	Delivery max (l/s)	328
IP	X4	Delivery max (m³/h)	1180
Max ambient temperature for continuous operation (°C)	70	Pressure max (mmH2O)	9,0
Min ambient temperature for continuous operation (°C)	-25	Pressure max (Pa)	82
Motor IP protection	55	RPM	1460
Nominal Diameter (mm)	250	Sound power level Lw [dB(A)]	45,8
Number of Phases (Ph)	1	Sound Pressure level Lp [dB (A)] 3m	25,3

### DIMENSIONS



Size A (mm)	∅ 319
Size B (mm)	∅ 264
Size C (mm)	300
Size D (mm)	∅ 292
Size E (mm)	14
Size F (mm)	9
Size G (mm)	4
Size H (mm)	45°

#### PER INFORMAZIONI:

Servizio al Cliente: tel +39 02 90699395 premendo 1 dopo messaggio registrato (consulenza su prodotti e impianti)

Pre & Post Vendita: fax +39 02 90699302

Email prevendita: [prevendita@vortice-italy.com](mailto:prevendita@vortice-italy.com)

# Technical Data Sheet

CODE 42263

## MPC-E 254 M

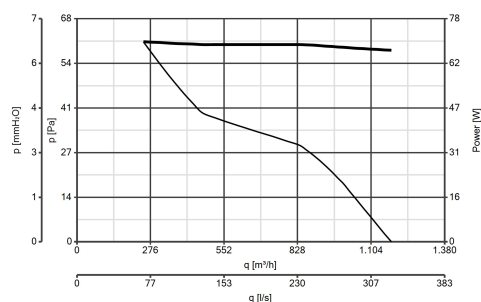
Medium-pressure long cased axial fans



### DESCRIPTION

- Nominal diameter 250 mm
- 2 rolled steel flange sections, welded, phosphated and polyester powder coated in practical grey colour with hammered effect finish, guaranteeing long-term resistance to atmospheric agents.
- 1 speed single phase AC motor with shaft turning in double shielded ball bearings, insulation class F.
- Maximum air flow: 1,180 m<sup>3</sup>/h.
- Impeller with 6 wing profile blades, dynamically balanced (UNI ISO 1940 – Balancing class 6.3), optimized to deliver maximum performance and low noise levels, moulded from filled polypropylene for superior dimensional stability and resistance to atmospheric agents, and keyed to a diecast aluminium hub.
- Vortice speed controller.

### CURVES

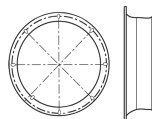


### ACCESSORIES



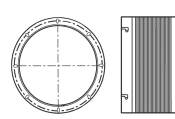
**IRM 30**

Code 12921



**MPC BO 250  
(BOCCAGLIO)**

Code 22535



**MPC RA 250  
(RACCORDO  
FLESSIBILE)**

Code 22516

#### PER INFORMAZIONI:

Servizio al Cliente: tel +39 02 90699395 premendo 1 dopo messaggio registrato (consulenza su prodotti e impianti)

Pre & Post Vendita: fax +39 02 90699302

Email prevendita: [prevendita@vortice-italy.com](mailto:prevendita@vortice-italy.com)