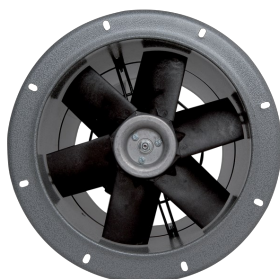


# Technical Data Sheet

CODE 42217

## MPC-E 354 M

Medium-pressure long cased axial fans



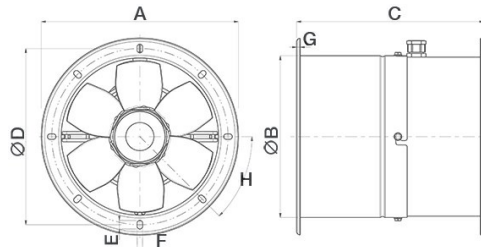
### Certifications



### TECHNICAL AND PERFORMANCE DATA

Absorbed Current max (A)	0,70	Number of Poles	4
Absorbed Power max (W)	152	Voltage (V)	230
Frequency (Hz)	50	Weight (Kg)	13,4
Insulation Class	I°	Delivery max (l/s)	875
IP	X4	Delivery max (m³/h)	3150
Max ambient temperature for continuous operation (°C)	70	Pressure max (mmH2O)	17.2
Min ambient temperature for continuous operation (°C)	-25	Pressure max (Pa)	169
Nominal Diameter (mm)	350	RPM	1450
Number of Phases (Ph)	1	Sound power level Lw [dB(A)]	57.3
		Sound Pressure level Lp [dB (A)] 3m	36.8

### DIMENSIONS



Size A (mm)	ø 432
Size B (mm)	ø 368
Size C (mm)	330
Size D (mm)	ø 405
Size E (mm)	14
Size F (mm)	9
Size G (mm)	4
Size H (mm)	45°

#### PER INFORMAZIONI:

Servizio al Cliente: tel +39 02 90699395 premendo 1 dopo messaggio registrato (consulenza su prodotti e impianti)

Pre & Post Vendita: fax +39 02 90699302

Email prevendita: [prevendita@vortice-italy.com](mailto:prevendita@vortice-italy.com)

# Technical Data Sheet

CODE 42217

## MPC-E 354 M

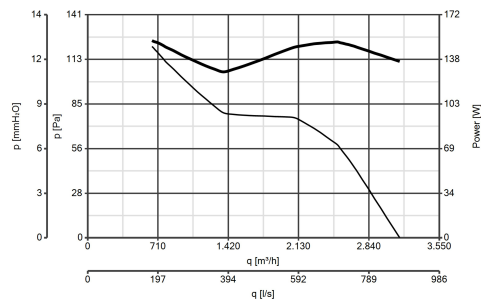
Medium-pressure long cased axial fans



### DESCRIPTION

- Nominal diameter 350 mm
- 2 rolled steel flange sections, welded, phosphated and polyester powder coated in practical grey colour with hammered effect finish, guaranteeing long-term resistance to atmospheric agents.
- 1 speed single phase AC motor with shaft turning in double shielded ball bearings, insulation class F.
- Maximum air flow: 3,500 m<sup>3</sup>/h.
- Impeller with 6 wing profile blades, dynamically balanced (UNI ISO 1940 – Balancing class 6.3), optimized to deliver maximum performance and low noise levels, moulded from filled polypropylene for superior dimensional stability and resistance to atmospheric agents, and keyed to a diecast aluminium hub.
- Vortice speed controller.

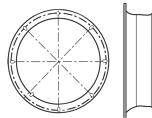
### CURVES



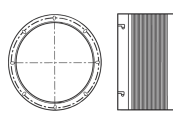
### ACCESSORIES



**IREM 3 CD**  
**99250080**  
Code 12931



**MPC BO 350**  
**(BOCCAGLIO)**  
Code 22537



**MPC RA 350**  
**(RACCORDO**  
**FLESSIBILE)**  
Code 22518



**MPC SU 350**  
**(SUPPORTO)**  
Code 22533

#### PER INFORMAZIONI:

Servizio al Cliente: tel +39 02 90699395 premendo 1 dopo messaggio registrato (consulenza su prodotti e impianti)  
Pre & Post Vendita: fax +39 02 90699302  
Email prevendita: [prevendita@vortice-italy.com](mailto:prevendita@vortice-italy.com)