

SAMSUNG

ClimateHub



**For ultimate
home climate
convenience**

samsung.com/climatehub

Overview ClimateHub

Samsung's ClimateHub brings with it the ultimate in home climate convenience – Samsung's integrated solution for heating and domestic hot water supply. With straightforward installation, smooth commissioning, quiet operation and smart connectivity, maintaining home comfort has finally been made easy.

For ultimate home climate convenience



Quiet operation

Today's climate systems need to meet increasingly strict sound level requirements and limit aural disturbance around the home. The Samsung ClimateHub system's 4-Step Quiet Mode¹ allows users to reduce noise levels of the heat pump outdoor unit to as low as 35dB(A)².



Smooth installation

The tank integrated hydro unit features a compact and modular design. It is easy to install because of its factory mounted hydraulic elements and a front mounted service window. With its intuitive servicing options, start-up can be done with only limited effort.



Smart connectivity

The ClimateHub system can be managed remotely. Using the optional Wi-Fi kit, users can control different aspects of the system through the Samsung SmartThings app³ turn it on and off, control and monitor its functions including controlling up to 16 indoor units with ease, from anywhere at any time.



Floor heating

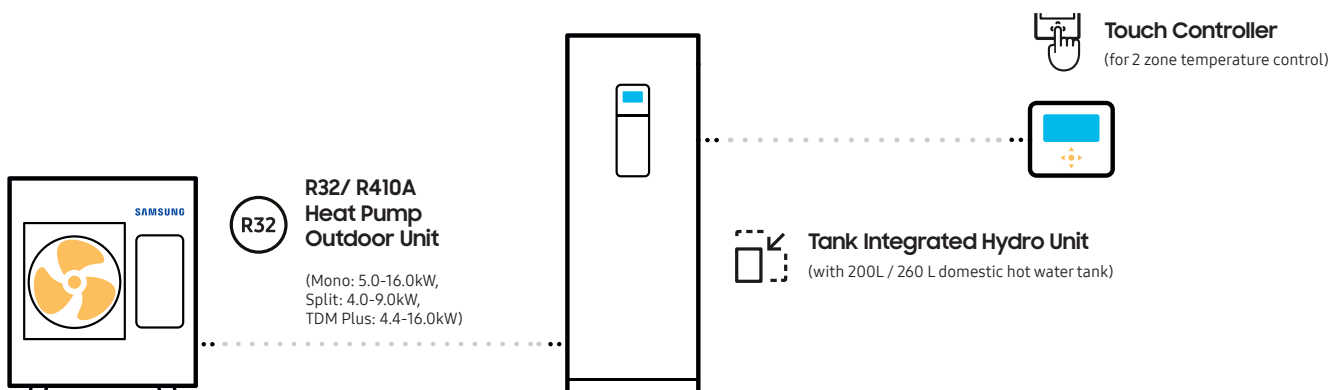


Radiator



Hot water

Integrated Samsung Solution



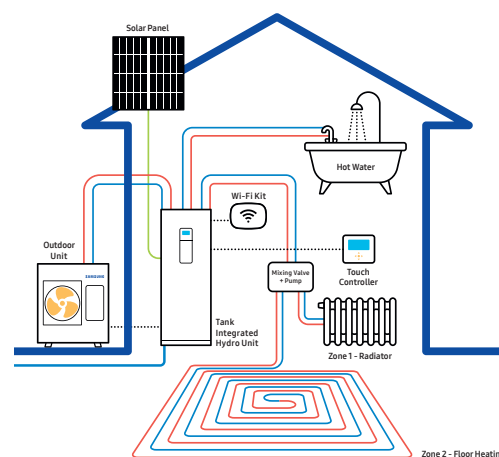
¹ClimateHub TDM Plus has a 3-Step Quiet Operation mode. ²Sound pressure levels are subject to execution and operating conditions. ³Smart connectivity requires a Wi-Fi connection and Samsung SmartThings application account. Wi-Fi Kit to be ordered separately. Requires iOS 10.0 or later & Android 5.0 or later.



Project: Casa L (Spain) | Project Architecture: ÁBATON | Interior Design: BATAVIA | Photography: Carlos Muntadas

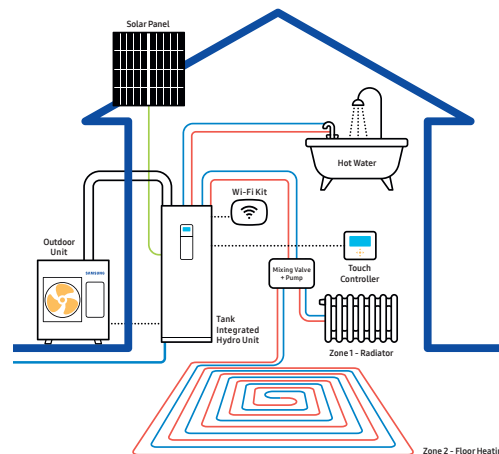
ClimateHub Mono

The ClimateHub Mono configuration has a single outdoor unit that includes the hydronic system, making it easy to install and use. The system's potential can be maximised by connecting to Smart Grid or Solar Power (PV).



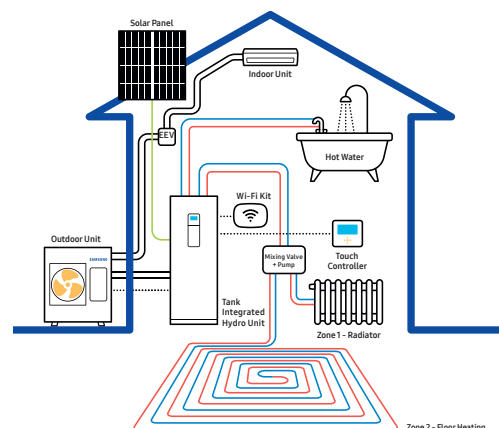
ClimateHub Split

The ClimateHub Split configuration has a single outdoor unit, connected by refrigerant pipes to the tank integrated hydro unit. To maximize its potential, the system can be connected to Smart Grid or Solar Power (PV).



ClimateHub TDM Plus NEW

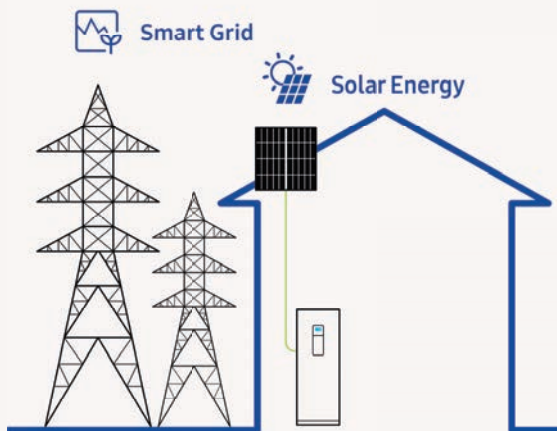
The TDM Plus system is an 'All-In-One' Air-to-Water (A2W) and Air-to-Air (A2A) system for a complete home climate solution. It can be used throughout the year for cooling and heating to meet a variety of different user situations and needs. It enables underfloor heating/cooling and radiator heating, as well as offering air-to-air cooling with various options for air conditioning. The system's potential can be maximized by connecting to Smart Grid or Solar Power (PV).



ClimateHub Features

Compact Design

The Samsung ClimateHub solution is built around a compact tank integrated hydro unit, with a large volume domestic hot water tank of either 200L or 260L. The compact and modular design makes for straightforward kitchen or utility room integration.



Smart Grid Ready & PV Enabled

A Smart Grid efficiently integrates the behaviour and actions of all the users connected to it. Smart Grid readiness enables users to benefit from an economically efficient and sustainable power supply. Thanks to the PV (Photovoltaic or 'solar' energy) enabled feature, the system can be connected to solar panels, saving energy through renewable sources.¹

¹ The usage of the PV Enabled feature requires additional third party equipment to be installed.

Smooth Servicing

With a conveniently placed servicing window and intuitive servicing options available through the use of a Micro SD card or the Samsung S-Checker Mobile App, troubleshooting and start-up can be done easily from the front of the unit.¹

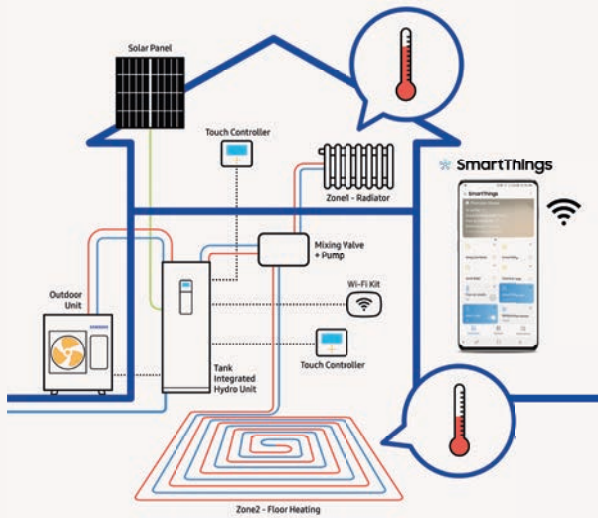
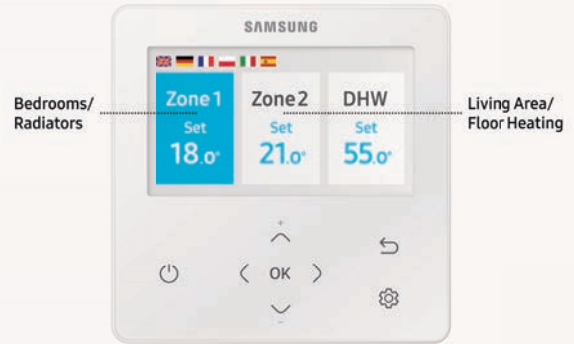
¹ Please refer to your direct Samsung contact person for more information about the S-Checker Mobile App.



Intuitive Control

Samsung's touch controller comes equipped with multiple language options and bright colour display – enabling temperature settings, energy monitoring, summer time setting and quick error monitoring.¹

¹ The image shows an application example and is for illustrative purposes only. Please always check latest information for understanding availability of language versions.



Smart Connectivity

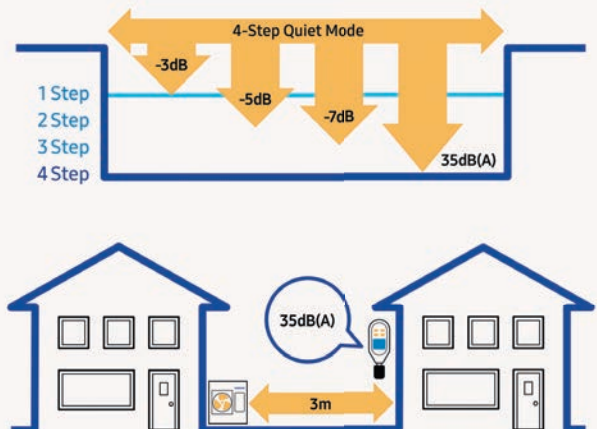
The touch controller enables users to manage different temperature settings per zone, meaning high-temperature radiators and low-temperature floor heating can be utilized efficiently. With the optional Wi-Fi Kit, different aspects of the system, including controlling and monitoring up to 16 indoor units through the Samsung SmartThings App.¹

¹ A Wi-Fi connection and Samsung SmartThings application account are required. Wi-Fi Kit to be ordered separately. Requires iOS 10.0 or later & Android 5.0 or later.

Quiet Operation

In order to meet increasingly strict sound level requirements, Samsung ClimateHub allows to reduce noise levels using the 4-Step Quiet Operation mode¹. Subject to specific models and particular operation conditions, it is possible to achieve levels as low as 35dB(A)².

¹ ClimateHub TDM Plus has a 3-Step Quiet Operation mode.
² Sound pressure levels are subject to execution and operating conditions.







SAMSUNG

Wind-Free™ Deluxe



Comfortably cool. Surprisingly still.

Samsung introduces a completely new Wind-Free™ wall-mounted model for its EHS TDM Plus product range. Equipped with Wind-Free™ technology, the micro-holes spread fresh air gently and evenly to enhance indoor comfort for ultimate indoor climate convenience.



Step 1

The front panel opens, and Fast Cooling mode cools the room quickly from corner to corner.



Step 2

The set temperature is reached in Fast Cooling mode, and the front panel closes.



Step 3

Wind-Free™ mode spreads fresh air uniformly through thousands of micro-holes.



Wind-Free™ Cooling

Wind-Free™ technology enhances your indoor comfort by using thousands of micro-holes to disperse fresh air uniformly without any unpleasant blasts of cold wind. In Wind-Free™ mode, air is spread softly and silently, creating a 'Still Air' environment¹ that provides you total well-being day and night.



Easy Control

Samsung Wind-Free™ is designed to make life easier. It can be operated via wired or wireless controllers that feature advanced functions for a convenient control of indoor climates. Temperatures can also be managed remotely using the SmartThings App². Turning it on and off, selecting the cooling mode or scheduling its operation is just one touch away.



Easy Installation

The Wind-Free™ Deluxe can be easily mounted through its snap-fit design and roller bracket. The installation process is simplified to fit in effortlessly to the exact position. With an easy-to-remove front grill and a separate cover panel, installers can minimise product damage and reduce service time.

¹ASHRAE (American Society of Heating, Refrigerating, and Air-Conditioning Engineers) defines "Still Air" as air currents at speeds below 0.15m/s which lacks the presence of cold drafts.

²A Wi-Fi connection and Samsung SmartThings application account are required. Wi-Fi Kit to be ordered separately. Requires iOS 10.0 or later & Android 5.0 or later.



Wi-Fi Kit 2.0 – Mobile Remote Control and Monitoring Solution

You can remotely control and monitor up to 16 indoor units with ease by using the SmartThings App².

Enhanced Convenience

The voice command feature is available through a mobile phone with Bixby¹. Temperatures can also be managed remotely anytime, and anywhere, using the SmartThings app².

Personalized Climate Environment

Operates in your preferred mode according to the user settings. The geofencing functionality allows the room temperature to be automatically set at the desired level when the user approaches within a preset distance from the building. The Wi-Fi-Kit (optional) is mandatory to enable a multi-device experience interoperable with smart appliances.

Energy Usage Monitoring³

Energy usage can be monitored daily, weekly and monthly at a glance.

Provides ease of installation

Allows for easy setup possible for up to 16 indoor units.



¹ App Voice Recognition: Bixby voice is an intelligent voice assistant that helps you use the device more conveniently.

¹ Currently voice control is supported in English (US, UK, Indian), Chinese, Korean, French, German, Italian, Spanish and Portuguese.
² A Wi-Fi connection and Samsung SmartThings application account are required. Wi-Fi-Kit to be ordered separately. Requires iOS 10.0 or later & Android 5.0 or later.
³ Current and daily, weekly or monthly energy usage of the outdoor unit is reference data calculated for information and reference purposes only.

Energy monitoring

Allows you to view your daily, weekly, and monthly energy usage at a glance



Energy service

Allows you to quickly check the energy usage of multiple devices in your home



Automation

Operates in your preferred mode according to the user settings



Welcome cooling/heating

Pre-cooling and pre-heating before your arrival at home



ClimateHub Line-up



Outdoor Unit

Tank Integrated Hydro Unit

Type	Power	Model Name	Capacity	Tank Integrated Hydro Unit (Split)			Tank integrated Hydro Unit (Mono)			Tank integrated Hydro Unit (TDM Plus)		
				200L(1Φ)	260L(1Φ)	260L(3Φ)	200L(1Φ)	260L(1Φ)	260L(3Φ)	200L(1Φ)	260L(1Φ/3Φ)	
				AE200RNWSEG/EU	AE260RNWSEG/EU	AE260RNWSSGG/EU	AE200RNWMEG/EU	AE260RNWMEG/EU	AE260RNWMGG/EU	AE200TNWTEH/EU	AE260TNWTEH/EU	
R32 Outdoor Unit	Split	1Φ	AE040RXEDEG/EU	4kW	•	•						
			AE060RXEDEG/EU	6kW	•	•						
			AE090RXEDEG/EU	9kW	•	•						
	Mono	1Φ	AE090RXEDGG/EU	9kW			•					
			AE050RXYDEG/EU	5kW				•				
			AE080RXYDEG/EU	8kW				•	•			
			AE120RXYDEG/EU	12kW				•	•			
		AE160RXYDEG/EU	16kW				•	•				
		3Φ	AE080RXYDGG/EU	8kW						•		
			AE120RXYDGG/EU	12kW						•		
AE160RXYDGG/EU	16kW							•				
R410A Outdoor Unit	TDM Plus	1Φ	AE044MXTPEH/EU	4.4kW						•	•	
			AE066MXTPEH/EU	6.6kW						•	•	
			AE090MXTPEH/EU	9kW						•	•	
			AE120MXTPEH/EU	12kW						•	•	
			AE160MXTPEH/EU	16kW						•	•	
		3Φ	AE090MXTPGH/EU	9kW						•	•	
			AE120MXTPGH/EU	12kW						•	•	
			AE160MXTPGH/EU	16kW						•	•	

TDM Plus Indoor Line-up



Type		Wind-Free™ Deluxe	Slim Duct	MSP Duct	Console
Capacity	2.2kW	•	•		•
	2.8kW	•	•		•
	3.6kW	•	•		•
	5.6kW	•	•		•
	7.1kW	•		•	
	9.0kW			•	

Optional Controller



Model	MIM-H04EN
Model name	Wi-Fi Kit 2.0
Max Connected IDU	16
App	SmartThings
Voice recognition	Bixby
Welcome Cooling/Heating	Geofencing
Automation	Customized control with a variety of execution rules
Add scene	Easy control throughout customized user mode
Energy monitoring	Individual energy monitoring up to 16 outdoor units
Product Size (mm) W x H x D	185 x 130 x 29

Model	MWR-WW10N
Model name	Touch Controller
Screen size/type	4.3" Color LCD display
Intuitive UI	Dynamic navigation with simplified buttons
Operation	Heating / Cooling/ Auto / DHW
Functions	Smart Grid Ready / PV Ready / 2-Zone Control / Energy consumption monitor / Energy saving
Smart Connectivity	SmartThings via optional Wi-Fi Kit 2.0
Languages	English, German, French, Italian, Spanish, Polish (EN, DE, FR, IT, ES, PL)
Product Size (mm) W x H x D	120x120x19

ClimateHub Specifications

ClimateHub Mono



		Indoor Unit		Outdoor Unit		Controller		AE200RNWMEG/EU	AE050RXDEG/EU	AE200RNWMEG/EU	AE080RXDEG/EU	AE200RNWMEG/EU	AE120RXDEG/EU	
								MWR-WW10N	MWR-WW10N	MWR-WW10N	MWR-WW10N	MWR-WW10N	MWR-WW10N	
System	Operation	Nominal Capacity	Heating A7/W35 ¹ / A7/W55 ²	W			5,000/4,300		8,000/7,100		12,000/11,300			
			Cooling A35/W18 ¹	W			5,000		7,500		12,000			
		Power Input (Nominal)	Heating A7/W35 ¹ / A7/W55 ²	W			1,030/1,520		1,770/2,530		2,650/3,730			
			Cooling A35/W18 ¹	W			1,140		1,900		2,770			
		COP (Nominal Heating) A7/W35 ¹ / A7/W55 ²	W/W			4.85/2.83		4.52/2.81		4.53/3.03				
		EER (Nominal Cooling) A35/W18 ¹	W/W			4.39		3.95		4.33				
		SCOP LWT 35°C / 55°C	W/W			4.46/3.2		4.44/3.23		4.69/3.51				
		Seasonal Space Heating enr. efficiency η _s LWT 35°C / 55°C	ETA%			175/125		175/126		185/138				
		Seasonal Space Heating Eff. class * LWT 35°C / 55°C	-			A+++/A++		A+++/A++		A+++/A++				
		Current	MCA	A			16.00		22.00		28.00			
			MFA	A			20.00		27.50		35.00			
		Water Flow Rate	Min	L/min			7.00		7.00		12.00			
			Max	L/min			48.00		48.00		58.00			
		Leaving Water Temperature ³	Heating	°C			15-65		15-65		15-65			
			Cooling	°C			5-25		5-25		5-25			
Functions	Smart Grid Ready	-			•		•		•					
	PV Enabled	-			•		•		•					
	2-Zone Control	-			•		•		•					
Tank Integrated Hydro Unit	Power Supply	Φ, #, V, Hz			1Φ, 2, 220-240V, 50Hz		1Φ, 2, 220-240V, 50Hz		1Φ, 2, 220-240V, 50Hz					
	Water Tank Volume	litres			200		200		200					
	Declared Load Profile	L/XL			L		L		L					
	Average water heating efficiency η _{wh}	ETA%			115		115		110					
	Average Energy Efficiency Class	-			A		A		A					
	Sound	Sound Pressure ⁴	Heating Std	dB(A)			26		26		30			
			Cooling Std	dB(A)			26		26		30			
	Sound Power	Heating Std	dB(A)			40		40		44				
dB(A)					40		40		44					
Dimensions	Net Weight	kg			130.0		130.0		130.0					
	Net Dimensions (WxHxD)	mm			595x1,800x700		595x1,800x700		595x1,800x700					
Outdoor Unit	Power Supply	Φ, V, Hz			1Φ, 220-240V, 50Hz		1Φ, 220-240V, 50Hz		1Φ, 220-240V, 50Hz					
	Compressor	Type			BLDC Twin Rotary		BLDC Twin Rotary		BLDC Twin Rotary					
	Base Heater	-			-		•		•					
	Sound	Sound Pressure ⁴	Heating Std	dB(A)			45		48		50			
			Cooling Std	dB(A)			45		48		50			
		Sound Power	Heating Std	dB(A)			61		63		64			
			Cooling Std	dB(A)			62		64		65			
	Dimensions	Net Weight	kg			58.5		76.0		110.0				
		Net Dimensions (WxHxD)	mm			880 x 798 x 310		940 x 998 x 330		940 x 1,420 x 330				
	Refrigerant	Type	-			R32		R32		R32				
		These products contain R32 (GWP=675) which is fluorinated greenhouse gas.												
		Factory Charging	tCO _{2e}	kg			0.68		0.78		1.49			
	Piping	Water Pipe (Space Heating)	Inlet/ Outlet	Φ, mm			28/28		28/28		28/28			
		Water pipe (DHW)	Inlet/ Outlet	Φ, mm			22/22		22/22		22/22			
	Operation	Ambient Temperature	Heating	°C			-25-35		-25-35		-25-35			
Cooling			°C			10-46		10-46		10-46				
DHW			°C			-25-43		-25-43		-25-43				

Accessories & Controls



Touch Controller

Touch Controller

DMS2.5

Wi-Fi Kit

External Thermostat

Backup Heater (4/6kW)

MWR-WW10N

MCM-A300N

MIM-D01AN

MIM-H04EN

MRW-TA

MHC-*00FE



AE200RNWMEG/EU
AE160RXYDEG/EU
MWR-WW10N

AE260RNWMEG/EU
AE080RXYDEG/EU
MWR-WW10N

AE260RNWMEG/EU
AE120RXYDEG/EU
MWR-WW10N

AE260RNWMEG/EU
AE160RXYDEG/EU
MWR-WW10N

16,000/15,000	8,000/7,100	12,000/11,300	16,000/15,000
14,000	7,500	12,000	14,000
3,620/5,180	1,770/2,530	2,650/3,730	3,620/5,180
3,280	1,900	2,770	3,280
4.42/2.90	4.52/2.81	4.53/3.03	4.42/2.90
4.27	3.95	4.33	4.27
4.48/3.53	4.44/3.23	4.69/3.51	4.48/3.53
176/138	175/126	185/138	176/138
A+++/A++	A+++/A++	A+++/A++	A+++/A++
32.00	22.00	28.00	32.00
40.00	27.50	35.00	40.00
12.00	7.00	12.00	12.00
58.00	48.00	58.00	58.00
15-65	15-65	15-65	15-65
5-25	5-25	5-25	5-25
•	•	•	•
•	•	•	•
•	•	•	•
1Φ,2,220-240,50Hz	1Φ,2,220-240,50Hz	1Φ,2,220-240,50Hz	1Φ,2,220-240,50Hz
200	260	260	260
L	XL	XL	XL
110	123	117	117
A	A	A	A
30	26	30	30
30	26	30	30
44	40	44	44
130.0	140.0	140.0	140.0
595x1,800x700	595x1,800x700	595x1,800x700	595x1,800x700
1Φ, 220-240V, 50Hz	1Φ, 220-240V, 50Hz	1Φ, 220-240V, 50Hz	1Φ, 220-240V, 50Hz
BLDC Twin Rotary	BLDC Twin Rotary	BLDC Twin Rotary	BLDC Twin Rotary
•	•	•	•
52	48	50	52
54	48	50	54
66	63	64	66
68	64	65	68
110.0	76.0	110.0	110.0
940 x 1,420 x 330	940 x 998 x 330	940 x 1,420 x 330	940 x 1,420 x 330
R32	R32	R32	R32
These products contain R32 (GWP=675) which is fluorinated greenhouse gas.			
1.49	0.78	1.49	1.49
2.20	1.15	2.20	2.20
28/28	28/28	28/28	28/28
22/22	22/22	22/22	22/22
-25-35	-25-35	-25-35	-25-35
10-46	10-46	10-46	10-46
-25-43	-25-43	-25-43	-25-43



* A+++ energy label is available according to EU No. 811/2013 label classification 2019, on a scale from D to A+++

¹ A2W Condition : (Heating) Water In/Out 30°C/35°C, Outdoor Air 7°C[DB]/6°C[WB]; (Cooling) Water In/Out 23°C/18°C, Outdoor Air 35°C[DB].

² A2W Condition : (Heating) Water In/Out 47°C/55°C, Outdoor Air 7°C[DB]/6°C[WB].

³ 65°C down to +10°C (max. 60°C down to -5°C)

⁴ Sound pressure level is obtained in an anechoic room. Sound pressure level is a relative value, depending on the distance and acoustic environment. Sound pressure level may differ depending on operation conditions.

ClimateHub Specifications

ClimateHub Mono (Continued)



		Indoor Unit		Outdoor Unit		Controller		AE260RNWMGG/EU	AE080RXYDGG/EU	AE260RNWMGG/EU	AE120RXYDGG/EU	AE260RNWMGG/EU	AE160RXYDGG/EU	
								MWR-WW10N	MWR-WW10N	MWR-WW10N	MWR-WW10N	MWR-WW10N	MWR-WW10N	
System	Operation	Nominal Capacity	Heating A7/W35 ¹ / A7/W55 ²	W			8,000/7,100		12,000/11,300		16,000/15,000			
			Cooling A35/W18 ¹	W			7,500		12,000		14,000			
		Power Input (Nominal)	Heating A7/W35 ¹ / A7/W55 ²	W			1,770/2,530		2,650/3,730		3,620/5,180			
			Cooling A35/W18 ¹	W			1,900		2,770		3,280			
		COP (Nominal Heating) A7/W35 ¹ / A7/W55 ²	W/W			4.52/2.81		4.53/3.03		4.42/2.90				
		EER (Nominal Cooling) A35/W18 ¹	W/W			3.95		4.33		4.27				
		SCOP LWT 35°C / 55°C	W/W			4.44/3.23		4.69/3.51		4.48/3.53				
		Seasonal Space Heating enr. efficiency η _s LWT 35°C / 55°C	ETA%			175/126		185/138		176/138				
		Seasonal Space Heating Eff. class * LWT 35°C / 55°C	-			A+++/A++		A+++/A++		A+++/A++				
		Current	MCA	A			10.00		10.00		12.00			
			MFA	A			16.10		16.10		16.10			
		Water Flow Rate	Min	L/min			7.00		12.00		12.00			
	Max		L/min			48.00		58.00		58.00				
	Leaving Water Temperature ³	Heating	°C			15-65		15-65		15-65				
		Cooling	°C			5-25		5-25		5-25				
	Functions	Smart Grid Ready	-			•		•		•				
		PV Enabled	-			•		•		•				
		2-Zone Control	-			•		•		•				
Tank Integrated Hydro Unit	Power Supply	Φ, #, V, Hz			3Φ, 4, 380-415, 50Hz		3Φ, 4, 380-415, 50Hz		3Φ, 4, 380-415, 50Hz					
	Water Tank Volume	litres			260		260		260					
	Declared Load Profile	L/XL			XL		XL		XL					
	Average water heating efficiency η _{wh}	ETA%			123		117		117					
	Average Energy Efficiency Class	-			A		A		A					
	Sound	Sound Pressure ⁴	Heating Std	dB(A)			26		30		30			
			Cooling Std	dB(A)			26		30		30			
	Sound Power	Heating Std	dB(A)			40		44		44				
Cooling Std			dB(A)			40		44		44				
Dimensions	Net Weight	kg			140.0		140.0		140.0					
	Net Dimensions (WxHxD)	mm			595x1,800x700		595x1,800x700		595x1,800x700					
Outdoor Unit	Power Supply	Φ, V, Hz			3Φ, 380-415V, 50Hz		3Φ, 380-415V, 50Hz		3Φ, 380-415V, 50Hz					
	Compressor	Type			BLDC Twin Rotary		BLDC Twin Rotary		BLDC Twin Rotary					
	Base Heater	-			•		•		•					
	Sound	Sound Pressure ⁴	Heating Std	dB(A)			48		50		52			
			Cooling Std	dB(A)			48		50		54			
		Sound Power	Heating Std	dB(A)			63		64		66			
			Cooling Std	dB(A)			64		65		68			
	Dimensions	Net Weight	kg			75.0		111.0		111.0				
		Net Dimensions (WxHxD)	mm			940 x 998 x 330		940 x 1,420 x 330		940 x 1,420 x 330				
	Refrigerant	Type	-			R32		R32		R32				
		These products contain R32 (GWP=675) which is fluorinated greenhouse gas.												
		Factory Charging	tCO _{2e}	kg			0.78		1.49		1.49			
	Piping	Water Pipe (Space Heating)	Inlet/ Outlet	Φ, mm			28/28		28/28		28/28			
		Water pipe (DHW)	Inlet/ Outlet	Φ, mm			22/22		22/22		22/22			
	Operation	Ambient Temperature	Heating	°C			-25-35		-25-35		-25-35			
Cooling			°C			10-46		10-46		10-46				
DHW			°C			-25-43		-25-43		-25-43				



* A+++ energy label is available according to EU No. 811/2013 label classification 2019, on a scale from D to A+++

¹ A2W Condition : (Heating) Water In/Out 30°C/35°C, Outdoor Air 7°C[DB]/6°C[WB]; (Cooling) Water In/Out 23°C/18°C, Outdoor Air 35°C[DB].

² A2W Condition : (Heating) Water In/Out 47°C/55°C, Outdoor Air 7°C[DB]/6°C[WB].

³ 65°C down to +10°C (max. 60°C down to -5°C)

⁴ Sound pressure level is obtained in an anechoic room. Sound pressure level is a relative value, depending on the distance and acoustic environment. Sound pressure level may differ depending on operation conditions.



Project: Atico en el Retiro (Spain)
Project Architecture: ÁBATON
Interior Design: BATAVIA
Photography: Belén Imaz

ClimateHub Specifications

ClimateHub Split

R32

A+++



		Indoor Unit		Outdoor Unit		Controller		AE200RNWSEG/EU	AE060RXEDEG/EU	AE090RXEDEG/EU	
		Outdoor Unit		Controller				AE200RNWSEG/EU	AE060RXEDEG/EU	AE090RXEDEG/EU	
								MWR-WW10N	MWR-WW10N	MWR-WW10N	
System	Operation	Nominal Capacity	Heating A7/W35 ¹ / A7/W55 ²	W	4,400/3,900	6,000/5,200	9,000/8,000				
			Cooling A35/W18 ¹	W	5,000	6,500	8,700				
		Power Input (Nominal)	Heating A7/W35 ¹ / A7/W55 ²	W	846/1,320	1,220/1,810	1,870/2,730				
			Cooling A35/W18 ¹	W	1,090	1,470	2,110				
		COP (Nominal Heating) A7/W35 ¹ / A7/W55 ²	W/W	5.20/2.95	4.92/2.87	4.81/2.93					
		EER (Nominal Cooling) A35/W18 ¹	W/W	4.59	4.42	4.12					
		SCOP LWT 35°C / 55°C	W/W	4.58/3.25	4.58/3.31	4.45/3.24					
		Seasonal space heating enr. efficiency η _s LWT 35°C / 55°C	ETA%	180/127	180/129	175/127					
		Average Seasonal space heating eff. class ** LWT 35°C / 55°C	-	A+++/A++	A+++/A++	A+++/A++					
		Current	MCA	A	16.00	16.00	22.00				
	MFA		A	20.00	20.00	27.50					
	Leaving Water Temperature ³	Heating	°C	15-65	15-65	15-65					
		Cooling	°C	5-25	5-25	5-25					
	Functions	Smart Grid Ready / PV Enabled	-	•	•	•					
		4-Step Quiet Mode	-	•	•	•					
2-Zone Control		-	•	•	•						
Tank Integrated Hydro Unit	Power Supply			Φ, #, V, Hz	1Φ, 2, 220-240V, 50Hz	1Φ, 2, 220-240V, 50Hz	1Φ, 2, 220-240V, 50Hz				
	Water Tank Volume			litres	200	200	200				
	Declared Load Profile			L/XL	L	L	L				
	Average water heating efficiency η _{wh}			ETA%	120	120	119				
	Average Energy Efficiency Class				A+	A+	A+				
	Sound	Sound Pressure ⁴	Heating Std	dB(A)	26	26	26				
			Cooling Std	dB(A)	26	26	26				
	Sound Power	Heating Std	dB(A)	40	40	40					
Dimensions	Net Weight			kg	136	136	136				
	Net Dimensions (WxHxD)			mm	595x1,800x700	595x1,800x700	595x1,800x700				
Outdoor Unit	Power Supply			Φ, V, Hz	1Φ, 220-240V, 50Hz	1Φ, 220-240V, 50Hz	1Φ, 220-240V, 50Hz				
	Compressor			Type	-	BLDC Twin Rotary	BLDC Twin Rotary	BLDC Twin Rotary			
	Base Heater				-	-	•				
	Sound	Sound Pressure ⁴	Heating Std	dB(A)	44	47	49				
			Cooling Std	dB(A)	46	47	49				
			Night Mode	dB(A)	<35	35	35				
		Sound Power	Heating Std	dB(A)	58	60	64				
	Cooling Std		dB(A)	61	62	63					
	Dimensions	Net Weight			kg	46.5	46.5	73.0			
		Net Dimensions (WxHxD)			mm	880 x 638 x 310	880 x 638 x 310	940 x 998 x 330			
	Refrigerant	Type			-	R32	R32	R32			
		These products contain R32 (GWP=675) which is fluorinated greenhouse gas.									
		Factory Charging			tCO ₂ e	0.81	0.81	0.95			
					kg	1.2	1.2	1.4			
	Piping	Piping Connections	Liquid Pipe	Φ, mm (inch)	6.35 (1/4")	6.35 (1/4")	6.35 (1/4")				
Gas Pipe			Φ, mm (inch)	15.88 (5/8")	15.88 (5/8")	15.88 (5/8")					
Piping length (ODU-IDU)		Max.[Equiv.]	m	30.00	30.00	35.00					
Level difference (IDU-IDU)		Max.	m	20.00	20.00	20.00					
Water pipe (Space Heating)		Inlet/Outlet	Φ, mm	28/28	28/28	28/28					
Water pipe (DHW)		Inlet/Outlet	Φ, mm	22/22	22/22	22/22					
Operation	Ambient Temperature	Heating	°C	-25-35	-25-35	-25-35					
		Cooling	°C	10-46	10-46	10-46					
		DHW	°C	-25-43	-25-43	-25-43					

Accessories & Controls



Touch Controller	Touch Controller	DMS2.5	Wi-Fi Kit	External Thermostat	Backup Heater (4/6kW)
MWR-WW10N	MCM-A300N	MIM-D01AN	MIM-H04EN	MRW-TA	MHC-*00FE



AE260RNWSEG/EU AE040RXEDEG/EU MWR-WW10N	AE260RNWSEG/EU AE060RXEDEG/EU MWR-WW10N	AE260RNWSEG/EU AE090RXEDEG/EU MWR-WW10N	AE260RNWSEG/EU AE090RXEDEG/EU MWR-WW10N
4,400/3,900	6,000/5,200	9,000/8,000	9,000/8,000
5,000	6,500	8,700	8,700
846/1,320	1,220/1,810	1,870/2,730	1,870/2,730
1,090	1,470	2,110	2,110
5.20/2.95	4.92/2.87	4.81/2.93	4.81/2.93
4.59	4.42	4.12	4.12
4.58/3.25	4.58/3.31	4.45/3.24	4.45/3.24
180/127	180/129	175/127	175/127
A+++/A++	A+++/A++	A+++/A++	A+++/A++
16.00	16.00	22.00	10.00
20.00	20.00	27.50	16.10
15-65	15-65	15-65	15-65
5-25	5-25	5-25	5-25
•	•	•	•
•	•	•	•
•	•	•	•
1Φ, 2, 220-240V, 50Hz	1Φ, 2, 220-240V, 50Hz	1Φ, 2, 220-240V, 50Hz	3Φ, 4, 380-415V, 50Hz
260	260	260	260
XL	XL	XL	XL
123	123	123	123
A+	A+	A+	A+
26	26	26	26
26	26	26	26
40	40	40	40
146.0	146.0	146.0	146.0
595x1,800x700	595x1,800x700	595x1,800x700	595x1,800x700
1Φ, 220-240V, 50Hz	1Φ, 220-240V, 50Hz	1Φ, 220-240V, 50Hz	3Φ, 380-415V, 50Hz
BLDC Twin Rotary	BLDC Twin Rotary	BLDC Twin Rotary	BLDC Twin Rotary
-	-	•	•
44	47	49	49
46	47	49	49
<35	35	35	35
58	60	64	64
61	62	63	63
46.5	46.5	73.0	72.0
880 x 638 x 310	880 x 638 x 310	940 x 998 x 330	940 x 998 x 330
R32	R32	R32	R32
These products contain R32 (GWP=675) which is fluorinated greenhouse gas.			
0.81	0.81	0.95	0.95
1.2	1.2	1.4	1.4
6.35 (1/4")	6.35 (1/4")	6.35 (1/4")	6.35 (1/4")
15.88 (5/8")	15.88 (5/8")	15.88 (5/8")	15.88 (5/8")
30.00	30.00	35.00	35.00
20.00	20.00	20.00	20.00
28/28	28/28	28/28	28/28
22/22	22/22	22/22	22/22
-25-35	-25-35	-25-35	-25-35
10-46	10-46	10-46	10-46
-25-43	-25-43	-25-43	-25-43



*35dB(A) is only applicable for 6kW and 9kW outdoor units down to +4°C stated in 3 m distance in an anechoic environment.

**A+++ energy label is available according to EU No. 811/2013 label classification 2019, on a scale from D to A+++

¹A2W Condition : (Heating) Water In/Out 30°C/35°C, Outdoor Air 7°C[DB]/6°C[WB]; (Cooling) Water In/Out 23°C/18°C, Outdoor Air 35°C[DB].

²A2W Condition : (Heating) Water In/Out 47°C/55°C, Outdoor Air 7°C[DB]/6°C[WB].

³65°C down to +10°C (max. 60°C down to -5°C)

⁴Sound pressure level is obtained in an anechoic room. Sound pressure level is a relative value, depending on the distance and acoustic environment. Sound pressure level may differ depending on operation conditions.

ClimateHub Specifications

ClimateHub TDM Plus (R410A) A+++



		Indoor Unit		Outdoor Unit		AE200TNWTEH/EU	AE200TNWTEH/EU
		Outdoor Unit		Controller		AE044MXTPEH/EU	AE066MXTPEH/EU
						MWR-WW10N	MWR-WW10N
System	Operation	Nominal Capacity	Heating A7/W35 ¹ / A7/W55 ²	W	4,400/ 3,830	6,600/ 4,800	
			Cooling A35/W18 ¹	W	5,100	6,700	
		Power Input (Nominal)	Heating A7/W35 ¹ / A7/W55 ²	W	930/ 1,370	1470/ 1,850	
			Cooling A35/W18 ¹	W	1,030	1,480	
		COP (Nominal Heating) A7/W35 ¹ / A7/W55 ²	W/W	4.73/ 2.80	4.49/ 2.59		
		EER (Nominal Cooling) A35/W18 ¹	W/W	4.95	4.53		
		SCOP LWT 35°C/ 55°C	W/W	4.41/ 2.83	4.41/ 2.96		
		Seasonal space heating enr. efficiency η _s LWT 35°C/ 55°C	ETA%	173/ 110	173/ 115		
		Average Seasonal space heating eff. class ** LWT 35°C/ 55°C	-	A++/A+	A++/A+		
		Current	MCA	A	18.00	20.00	
			MFA	A	25.00	25.00	
		Maximum allowable IDU connections (Hydro A2W unit not included)	Max. number of IDU		EA	2	3
			Total capacity Min. (Cooling)		kW	2.20	3.30
			Total capacity Min. (Cooling)		kW	4.40	6.60
	Leaving Water Temperature ³	Heating	°C	15-55	15-55		
		Cooling	°C	5-25	5-25		
	Functions	Smart Grid Ready / PV Enabled		-	•	•	
		3-Step Quiet Mode		-	•	•	
		2-Zone Control		-	•	•	
	Tank Integrated Hydro Unit	Power Supply		Φ, #, V, Hz	1Φ, 2, 220-240V, 50Hz	1Φ, 2, 220-240V, 50Hz	
Water Tank Volume		litres	200	200			
Declared Load Profile		L/XL	L	L			
Average water heating efficiency η _{wh}		ETA%	115	115			
Average Energy Efficiency Class			A+	A+			
Sound		Sound Pressure ⁴	Heating Std	dB(A)	29	29	
			Cooling Std	dB(A)	29	29	
		Sound Power	Heating Std	dB(A)	43	43	
Dimensions	Net Weight		kg	137	137		
	Net Dimensions (WxHxD)		mm	595x1,800x700	595x1,800x700		
Outdoor Unit	Power Supply		Φ, V, Hz	1Φ, 2, 220-240V, 50Hz	1Φ, 2, 220-240V, 50Hz		
	Compressor	Type	-	Rotary Comp	Rotary Comp		
	Sound	Sound Pressure ⁴	Heating Std	dB(A)	47	48	
			Cooling Std	dB(A)	46	47	
		Sound Power	Heating Std	dB(A)	65	67	
	Dimensions	Net Weight		kg	61.0	61.0	
		Net Dimensions (WxHxD)		mm	880 x 793 x 310	880 x 793 x 310	
	Refrigerant	Type		Type	R410A	R410A	
		Factory Charging		tCO _{2e}	5.43	5.43	
				kg	2.6	2.6	
	Piping	Piping Connections	Liquid Pipe	Φ, mm (inch)	9.52 (3/8")	9.52 (3/8")	
			Gas Pipe	Φ, mm (inch)	15.88 (5/8")	15.88 (5/8")	
		Piping length (ODU-IDU)	Max.[Equiv.]	m	30	30	
		Level difference (IDU-IDU)	Max.	m	20	20	
		Chargeless length		m	10	10	
		Water pipe (DHW)	Inlet/Outlet	Φ, inch	1+1/4"	1+1/4"	
	Operation	Ambient Temperature A2W	Heating	°C	-25-35	-25-35	
			Cooling	°C	10-46	10-46	
			DHW	°C	-25-43	-25-43	
		Ambient Temperature A2A	Heating	°C	-25-24	-25-24	
Cooling			°C	10-46	10-46		

Accessories & Controls



Touch Controller	Touch Controller	DMS2.5	Wi-Fi Kit	External Thermostat	Backup Heater (4/6kW)
MWR-WW10N	MCM-A300N	MIM-D01AN	MIM-H04EN	MRW-TA	MHC-*00FE



AE200TNWTEH/EU AE090MXTPEH/EU MWR-WW10N	AE200TNWTEH/EU AE090MXTPGH/EU MWR-WW10N	AE260TNWTEH/EU AE044MXTPEH/EU MWR-WW10N	AE260TNWTEH/EU AE066MXTPEH/EU MWR-WW10N
9,000/ 7,660	9,000/ 7,660	4,400/ 3,830	6,600/ 4,800
8,000	8,000	5,100	6,700
2,120/ 2,820	2,120/ 2,820	930/ 1,370	1,470/ 1,850
1,850	1,860	1,030	1,480
4.25/ 2.72	4.25/ 2.69	4.73/ 2.80	4.49/ 2.59
4.32	4.30	4.95	4.53
4.42/ 3.01	4.44/ 2.86	4.41/ 2.83	4.41/ 2.96
173/ 117	175/ 111	175/ 110	173/ 115
A++/A+	A+++/A+	A++/A+	A++/A+
22.00	10.00	18.00	20.00
27.50	16.10	25.00	25.00
4	4	2	3
4.50	4.50	2.20	3.30
9.00	9.00	4.40	6.60
15-55	15-55	15-55	15-55
5-25	5-25	5-25	5-25
•	•	•	•
•	•	•	•
•	•	•	•
1Φ, 2, 220-240V, 50Hz	1Φ, 2, 220-240V, 50Hz	1Φ, 2, 220-240V, 50Hz	1Φ, 2, 220-240V, 50Hz
200	200	260	260
L	L	XL	XL
115	115	105	105
A+	A+	A	A
29	29	29	29
29	29	29	29
43	43	43	43
137	137	147	147
595x1,800x700	595x1,800x700	595x1,800x700	595x1,800x700
1Φ, 2, 220-240V, 50Hz	3Φ, 4, 380-415V, 50Hz	1Φ, 2, 220-240V, 50Hz	1Φ, 2, 220-240V, 50Hz
Rotary Comp	Rotary Comp	Rotary Comp	Rotary Comp
51	51	47	48
50	50	46	47
69	69	65	67
74.0	76.0	61.0	61.0
940 x 998 x 330	940 x 998 x 330	880 x 793 x 310	880 x 793 x 310
R410A	R410A	R410A	R410A
These products contain R410A (GWP=2,088) which is fluorinated greenhouse gas.			
5.01	5.01	5.43	5.43
2.4	2.4	2.6	2.6
9.52 (3/8")	9.52 (3/8")	9.52 (3/8")	9.52 (3/8")
15.88 (5/8")	15.88 (5/8")	15.88 (5/8")	15.88 (5/8")
30	30	30	30
20	20	20	20
10	10	10	10
1+1/4"	1+1/4"	1+1/4"	1+1/4"
-25-35	-25-35	-25-35	-25-35
10-46	10-46	10-46	10-46
-25-43	-25-43	-25-43	-25-43
-25-24	-25-24	-25-24	-25-24
10-46	10-46	10-46	10-46



**A+++ energy label is available according to EU No. 811/2013 label classification 2019, on a scale from D to A+++

¹A2W Condition : (Heating) Water In/Out 30°C/35°C, Outdoor Air 7°C[DB]/6°C[WB]; (Cooling) Water In/Out 23°C/18°C, Outdoor Air 35°C[DB].

²A2W Condition : (Heating) Water In/Out 47°C/55°C, Outdoor Air 7°C[DB]/6°C[WB].

³65°C down to +10°C (max. 60°C down to -5°C)

⁴Sound pressure level is obtained in an anechoic room. Sound pressure level is a relative value, depending on the distance and acoustic environment. Sound pressure level may differ depending on operation conditions.

HP Keymark certification for TDM Plus line-up is scheduled to for Q3'20.

ClimateHub Specifications

ClimateHub TDM Plus (R410A) (Continued) A+++



		Indoor Unit		Outdoor Unit		AE260TNWTEH/EU	AE260TNWTEH/EU
		Outdoor Unit		Controller		AE090MXTPEH/EU	AE120MXTPEH/EU
						MWR-WW10N	MWR-WW10N
System	Operation	Nominal Capacity	Heating A7/W35 ¹ / A7/W55 ²	W		9,000/ 7,660	12,000/ 10,720
			Cooling A35/W18 ¹	W		8,000	12,000
		Power Input (Nominal)	Heating A7/W35 ¹ / A7/W55 ²	W		2,120/ 2,820	2,720/ 3,910
			Cooling A35/W18 ¹	W		1,850	2,900
		COP (Nominal Heating) A7/W35 ¹ / A7/W55 ²	W/W		4.25/ 2.72	4.41/ 2.74	
		EER (Nominal Cooling) A35/W18 ¹	W/W		4.32	4.14	
		SCOP LWT 35°C/ 55°C	W/W		4.42/ 3.01	4.65/ 2.92	
		Seasonal space heating enr. efficiency η _s LWT 35°C/ 55°C	ETA%		174/ 117	183/ 114	
		Average Seasonal space heating eff. class ** LWT 35°C/ 55°C	-		A++/A+	A+++/A+	
		Current	MCA	A		22.00	28.00
			MFA	A		27.50	35.00
		Maximum allowable IDU connections (Hydro A2Wunit not included)	Max. number of IDU	EA		4	5
	Total capacity Min. (Cooling)		kW		4.50	6.00	
	Total capacity Min. (Cooling)		kW		9.00	12.10	
	Leaving Water Temperature ³	Heating	°C		15-55	15-55	
		Cooling	°C		5-25	5-25	
	Functions	Smart Grid Ready / PV Enabled	-		•	•	
		3-Step Quiet Mode	-		•	•	
2-Zone Control		-		•	•		
Tank Integrated Hydro Unit	Power Supply	Φ, #, V, Hz		1Φ, 2, 220-240V, 50Hz	1Φ, 2, 220-240V, 50Hz		
	Water Tank Volume	litres		260	260		
	Declared Load Profile	L/XL		XL	XL		
	Average water heating efficiency η _{wh}	ETA%		105	95		
	Average Energy Efficiency Class			A	A		
	Sound	Sound Pressure ⁴	Heating Std	dB(A)	29	29	
			Cooling Std	dB(A)	29	29	
	Sound Power	Heating Std		dB(A)	43	47	
Dimensions	Net Weight	kg		147	147		
	Net Dimensions (WxHxD)	mm		595x1,800x700	595x1,800x700		
Outdoor Unit	Power Supply	Φ, V, Hz		1Φ, 2, 220-240V, 50Hz	1Φ, 2, 220-240V, 50Hz		
	Compressor	Type	-	Rotary Comp	Rotary Comp		
	Sound	Sound Pressure ⁴	Heating Std	dB(A)	51	52	
			Cooling Std	dB(A)	50	51	
		Sound Power	Heating Std	dB(A)	69	70	
	Dimensions	Net Weight	kg		74.0	107.0	
		Net Dimensions (WxHxD)	mm		940 x 998 x 330	940 x 1,420 x 330	
	Refrigerant	Type	-		R410A	R410A	
		Factory Charging	tCO ₂ e		5.01	7.31	
			kg		2.4	3.5	
	Piping	Piping Connections	Liquid Pipe	Φ, mm (inch)	9.52 (3/8")	9.52 (3/8")	
			Gas Pipe	Φ, mm (inch)	15.88 (5/8")	15.88 (5/8")	
		Piping length (ODU-IDU)	Max.[Equiv.]	m		30	70
		Level difference (IDU-IDU)	Max.	m		20	30
		Chargeless length		m		10	10
		Water pipe (DHW)	Inlet/Outlet	Φ, inch		1+1/4"	1+1/4"
	Operation	Ambient Temperature A2W	Heating	°C	-25-35	-25-35	
			Cooling	°C	10-46	10-46	
DHW			°C	-25-43	-25-43		
Ambient Temperature A2A		Heating	°C	-25-24	-25-24		
		Cooling	°C	10-46	10-46		

These products contain R410A (GWP=2,088) which is fluorinated greenhouse gas.

Accessories & Controls



Touch Controller	Touch Controller	DMS2.5	Wi-Fi Kit	External Thermostat	Backup Heater (4/6kW)
MWR-WW10N	MCM-A300N	MIM-D01AN	MIM-H04EN	MRW-TA	MHC-*00FE



AE260TNWTEH/EU AE160MXTPEH/EU MWR-WW10N	AE260TNWTEH/EU AE090MXTPGH/EU MWR-WW10N	AE260TNWTEH/EU AE120MXTPGH/EU MWR-WW10N	AE260TNWTEH/EU AE160MXTPGH/EU MWR-WW10N
16,000/14,600	9,000/7,660	12,000/10,720	16,000/14,600
14,500	8,000	12,000	14,500
3,950/ 5,320	2,120/ 2,820	2,720/ 3,910	3,950/ 5,320
3,840	1,860	2,900	3,840
4.25/ 2.69	4.41/ 2.74	4.41/ 2.74	4.41/ 2.74
3.78	4.30	4.14	3.78
4.44/ 2.86	4.65/ 2.92	4.63/ 3.06	4.63/ 3.06
182/ 119	175/ 111	183/ 114	182/ 119
A+++/A+	A+++/A+	A+++/A+	A+++/A+
32.00	10.00	10.00	12.00
40.00	16.10	16.10	16.10
7	4	5	7
7.70	4.50	6.00	7.70
15.40	9.00	12.10	15.40
15-55	15-55	15-55	15-55
5-25	5-25	5-25	5-25
•	•	•	•
•	•	•	•
•	•	•	•
1Φ, 2, 220-240V, 50Hz	1Φ, 2, 220-240V, 50Hz	1Φ, 2, 220-240V, 50Hz	1Φ, 2, 220-240V, 50Hz
260	260	260	260
XL	XL	XL	XL
95	105	95	95
A	A	A	A
29	29	29	29
29	29	29	29
47	43	47	47
147	147	147	147
595x1,800x700	595x1,800x700	595x1,800x700	595x1,800x700
1Φ, 2, 220-240V, 50Hz	3Φ, 4, 380-415V, 50Hz	3Φ, 4, 380-415V, 50Hz	3Φ, 4, 380-415V, 50Hz
Rotary Comp	Rotary Comp	Rotary Comp	Rotary Comp
55	51	52	55
54	50	51	54
73	69	70	73
107.0	76.0	107.0	107.0
940 x 1,420 x 330	940 x 998 x 330	940 x 1,420 x 330	940 x 1,420 x 330
R410A	R410A	R410A	R410A
These products contain R410A (GWP=2,088) which is fluorinated greenhouse gas.			
7.31	5.01	7.31	7.31
3.5	2.4	3.5	3.5
9.52 (3/8")	9.52 (3/8")	9.52 (3/8")	9.52 (3/8")
15.88 (5/8")	15.88 (5/8")	15.88 (5/8")	15.88 (5/8")
70	30	70	70
30	20	30	30
10	10	10	10
1+1/4"	1+1/4"	1+1/4"	1+1/4"
-25-35	-25-35	-25-35	-25-35
10-46	10-46	10-46	10-46
-25-43	-25-43	-25-43	-25-43
-25-24	-25-24	-25-24	-25-24
10-46	10-46	10-46	10-46



**A+++ energy label is available according to EU No. 811/2013 label classification 2019, on a scale from D to A+++

¹A2W Condition : (Heating) Water In/Out 30°C/35°C, Outdoor Air 7°C[DB]/6°C[WB]; (Cooling) Water In/Out 23°C/18°C, Outdoor Air 35°C[DB].

²A2W Condition : (Heating) Water In/Out 47°C/55°C, Outdoor Air 7°C[DB]/6°C[WB].

³65°C down to +10°C (max. 60°C down to -5°C)

⁴Sound pressure level is obtained in an anechoic room. Sound pressure level is a relative value, depending on the distance and acoustic environment. Sound pressure level may differ depending on operation conditions.

HP Keymark certification for TDM Plus line-up is scheduled to for Q3'20.

ClimateHub Specifications

TDM Plus Wind-Free™ Deluxe



Type			TDM Plus Wind-Free™ Deluxe	TDM Plus Wind-Free™ Deluxe	TDM Plus Wind-Free™ Deluxe
Model Name			AE022TNXDEH/EU	AE028TNXDEH/EU	AE036TNXDEH/EU
Power Supply		Φ, #, V, Hz	1, 2, 220-240, 50	1, 2, 220-240, 50	1, 2, 220-240, 50
Capacity	Cooling	kW	2.20	2.80	3.60
	Heating	kW	2.50	3.20	4.00
Power Input (Nominal)	Cooling	W	24.0	30.0	37.0
	Heating	W	24.0	30.0	37.0
Current Input (Nominal)	Cooling	A	0.16	0.20	0.25
	Heating	A	0.16	0.20	0.25
Fan	Type	-	Cross flow Fan	Cross flow Fan	Cross flow Fan
	Quantity	EA	1	1	1
	Air Flow Rate H/M/L	m ³ /min		5.7/5.0/4.5	8.5/7.7/6.9
l/s			95.0/83.3/75.0	141.7/128.3/115.0	171.7/151.7/138.3
Fan motor	Type	-	BLDC	BLDC	BLDC
	Output x _n	W	27x1	27x1	27x1
Piping Connections	Liquid Pipe	Φ, mm(inch)	6.35 (1/4")	6.35 (1/4")	6.35 (1/4")
	Gas Pipe	Φ, mm(inch)	12.7 (1/2")	12.7 (1/2")	12.7 (1/2")
Wiring connections	For power supply below 20m/over 20m (min)	mm ²	1.5/2.5	1.5/2.5	1.5/2.5
	Communication (min)	mm ²	0.75	0.75	0.75
Refrigerant	Type	-	R410A (Fluorinated greenhouse gas, GWP=2,088)		
	Control Method ¹	-	EEV NOT INCLUDED	EEV NOT INCLUDED	EEV NOT INCLUDED
Sound	Sound Pressure H/M/L/WF ²	dB(A)	34/32/30/27	34/33/32/26	40/36/34/26
	Sound Power	dB(A)	51	52	56
Dimensions	Net Weight	kg	8.50	9.00	9.00
	Net Dimensions (WxHxD)	mm	820 x 299 x 215	820 x 299 x 215	820 x 299 x 215
Functions					
Air Flow	Wind-Free™ Cooling		•	•	•
	Air Direction Control (Up/Down)		Auto	Auto	Auto
	Air Direction Control (Left/Right)		Auto	Auto	Auto
Air Purification	Auto Fan speed		•	•	•
	Tri-Care Filter		•	•	•
	Easy Filter Plus		•	•	•
Operating Mode	Auto Clean (Self Cleaning)		•	•	•
	2 Step Cooling		•	•	•
	AI Auto Comfort with Wi-Fi & MDS (direct/indirect)		•	•	•
	AI Auto Comfort with Wi-Fi		•	•	•
	Auto Mode (without Wi-Fi)		•	•	•
	Fast Cool		•	•	•
	Good Sleep		•	•	•
	Eco		•	•	•
	Dehumidification		•	•	•
	Fan		•	•	•
	Quiet		•	•	•
Other Functions	Samsung SmartThings		•	•	•
	MDS (Motion Detect Sensor)		•	•	•
	Indoor Temp. Display		•	•	•
	Display On/Off	88 Display	•	•	•
	Beep On/Off		•	•	•
	Auto Changeover		•	•	•
	Auto Restart		•	•	•

Accessories & Controls



1-room EEV Kit

2/3 Room EEV Kit

Wireless Remote Controller (included)

Touch Controller

Wired Remote Controller

DMS2.5

Wi-Fi Kit

MEV-E**SA

MXD-E**K***A

AR-EH03E

MWR-SH11N

MWR-WE13N

MIM-D01AN

MIM-H04EN



TDM Plus Wind-Free™ Deluxe

TDM Plus Wind-Free™ Deluxe

AE056TNXDEH/EU

AE071TNXDEH/EU

1,2,220-240,50

1,2,220-240,50

5.60

6.80

6.30

7.00

52.0

60.0

52.0

60.0

0.35

0.40

0.35

0.40

Cross flow Fan

Cross flow Fan

1

1

15.7/13.8/12.0

16.8/15.0/13.2

261.7/230.0/200.0

280.0/250.0/220.0

BLDC

BLDC

27x1

27x1

6.35 (1/4")

9.52 (3/8")

12.7 (1/2")

15.88 (5/8")

1.5/2.5

1.5/2.5

0.75

0.75

R410A (Fluorinated greenhouse gas, GWP=2,088)

EEV NOT INCLUDED

EEV NOT INCLUDED

40/37/34/29

43/40/37/29

58

62

11.50

11.50

1,055 x 299 x 215

1,055 x 299 x 215

•

•

Auto

Auto

Auto

Auto

•

•

•

•

•

•

•

•

•

•

•

•

•

•

•

•

•

•

•

•

•

•

•

•

•

•

•

•

•

•

•

•

•

•

•

•

•

•

•

•

•

•

•

•

Capacities are based on (Equivalent refrigerant piping 7.5m, Level differences 0m)

Cooling : Indoor temperature 27°C DB, 19°C WB / Outdoor temperature 35°C DB, 24°C WB

Heating : Indoor temperature 20°C DB, 15°C WB / Outdoor temperature 7°C DB, 6°C WB

¹EEV Kit is necessary to control the refrigerant flow in the Wind-Free™ Deluxe (EEV Excluded), please order EEV Kit separately.

²Sound pressure level is obtained in an anechoic room. Sound pressure level is a relative value, depending on the distance and acoustic environment. Sound pressure level may differ depending on operation conditions.

Specifications

TDM Plus Slim Duct



Type				Slim Duct	Slim Duct	Slim Duct	Slim Duct
Model Name				AE022MNLDEH/EU	AE028MNLDEH/EU	AE036MNLDEH/EU	AE056MNLDEH/EU
Power Supply	Φ, #, V, Hz			1, 2, 220-240, 50	1, 2, 220-240, 50	1, 2, 220-240, 50	1, 2, 220-240, 50
Performance	Capacity	Cooling / Heating	kW	2.2/2.5	2.8/3.2	3.6/4.0	5.6/6.3
Power	Power Input	Cooling / Heating	W	55/55	60/60	65/65	95/95
	Current Input	Cooling / Heating	A	0.30/0.30	0.32/0.32	0.33/0.33	0.53/0.53
Fan	Type	-		Sirocco Fan	Sirocco Fan	Sirocco Fan	Sirocco Fan
	Quantity	EA		2	2	2	2
	Air Flow Rate	H/M/L (UL)	m ³ /min	7.0 / 6.1 / 5.3	7.5 / 6.6 / 5.6	7.5 / 6.6 / 5.6	12.0 / 10.5 / 9.0
	External Pressure	Max. (Min/Std/Max)	mmAq	Pa	0/1/3	0/1/3	0/1/3
				0/9.8/29.4	0/9.8/29.4	0/9.8/29.4	0/19.6/39.2
Fan Motor	Type	-		SSR non-feedback	SSR non-feedback	SSR non-feedback	SSR non-feedback
	Output x n	W		28x1	28x1	28x1	28x1
Piping Connections	Liquid Pipe	Φ, mm (inch)		6.35 (1/4")	6.35 (1/4")	6.35 (1/4")	6.35 (1/4")
	Gas Pipe	Φ, mm (inch)		12.7 (1/2")	12.7 (1/2")	12.7 (1/2")	12.7 (1/2")
Refrigerant	Type	-		R410A(Fluorinated greenhouse gas, GWP=2,088)			
Sound	Sound Pressure	H/M/L	dB(A)	26 / 24 / 21	28 / 26 / 23	32 / 30 / 27	36 / 34 / 31
	Sound Power	dB(A)		49	49	51	55
Dimensions	Net Weight	kg		19	19	19,5	24,5
	Net Dimensions (W×H×D)	mm		700 x 199 x 600	700 x 199 x 600	700 x 199 x 600	900x199x600
Optional Accessories	Drain Pump	Model	-	MDP-E075SEE3D (Built-in)	MDP-E075SEE3D (Built-in)	MDP-E075SEE3D (Built-in)	MDP-E075SEE3D (Built-in)
		Max. lifting Height/Displacement	mm / Liter/h	750 / 24	750 / 24	750 / 24	750 / 24

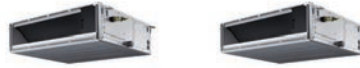
Accessories & Controls



Drain Pump (Built-in)	Remote Control	Touch Controller	Wired Remote Control	Wireless Receiver Kit	Touch Controller	DMS2.5	Wi-Fi Kit	External Thermostat
MDP-E075SEE3D	AR-EH00	MWR-SH11N	MWR-WE13N	MRK-A10N	MCM-A300N	MIM-D01AN	MIM-H04EN	MRW-TA

Specifications

TDM Plus MSP Duct



Type				MSP Duct	MSP Duct
Model Name				AE071MNMPEH/EU	AE090MNMPEH/EU
Power Supply	Φ, #, V, Hz			1, 2, 220-240, 50	1, 2, 220-240, 50
Performance	Capacity	Cooling / Heating	kW	7.1/8.0	9.0/10.0
	Power Input	Cooling / Heating	W	120/120	145/145
	Current Input	Cooling / Heating	A	1.0/1.0	1.2/1.2
Fan	Type	-		Sirocco Fan	Sirocco Fan
	Quantity	EA		2	2
	Air Flow Rate	H/M/L (UL)	m ³ /min	22 / 19 / 16	29 / 25 / 22
	External Pressure	Max. (Min/Std/Max)	mmAq	0 / 3 / 15	0 / 4 / 15
		Pa	0 / 29.4 / 147.2	0 / 29.4 / 147.2	
Fan Motor	Type	-		BLDC Feedback	BLDC Feedback
	Output x n	W		153x1	153x1
Piping Connections	Liquid Pipe	Φ, mm (inch)		9.52 (3/8")	9.52 (3/8")
	Gas Pipe	Φ, mm (inch)		15.88 (5/8")	15.88 (5/8")
Refrigerant	Type	-		R410A(Fluorinated greenhouse gas, GWP=2,088)	
Sound	Sound Pressure	H/M/L	dB(A)	37 / 33 / 29	38 / 35 / 32
	Sound Power	dB(A)		57	58
Dimensions	Net Weight	kg		25,5	33
	Net Dimensions (W×H×D)	mm		850x250x700	1,200x250x700
Optional Accessories	Drain Pump	Model	-	MDP-G075SQ (Built-in)	MDP-G075SQ (Built-in)
				MDP-G075SP (External)	MDP-G075SP (External)
		Max. lifting Height/ Displacement	mm / Liter/h	750 / 24	750 / 24

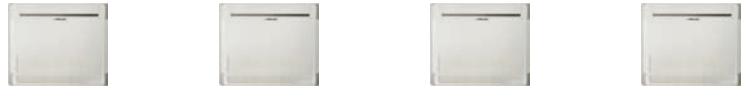
Accessories & Controls



Drain Pump (Built-in)	External Drain Pump	Remote Control	Touch Controller	Wired Remote Control	Touch Controller	DMS2.5	Wi-Fi Kit	External Thermostat	Wireless Receiver Kit
MDP-G075SQ	MDP-G075SP	AR-EH00	MWR-SH11N	MWR-WE13N	MCM-A300N	MIM-D01AN	MIM-H04EN	MRW-TA	MRK-A10N

Specifications

TDM Plus Console (SPI Included)



Type				Console	Console	Console	Console
Model Name				AE022MNJDEH/EU	AE028MNJDEH/ EU	AE036MNJDEH/ EU	AE056MNJDEH/ EU
Power Supply		Φ, #, V, Hz		1, 2, 220-240, 50	1, 2, 220-240, 50	1, 2, 220-240, 50	1, 2, 220-240, 50
Performance	Capacity	Cooling / Heating	kW	2.2/2.5	2.8/3.2	3.6/4.0	5.6/6.3
Power	Power Input	Cooling / Heating	W	16/16	30/30	35/35	62/62
	Current Input	Cooling / Heating	A	0.13/0.13	0.25/0.25	0.29/0.29	0.49/0.49
Fan	Type		-	Turbo Fan	Turbo Fan	Turbo Fan	Turbo Fan
	Quantity		EA	1	1	1	1
	Air Flow Rate	H/M/L (UL)	m ³ /min	6.3 / 5.4 / 4.9	7.0 / 6.0 / 5.0	8.50 / 7.50 / 6.50	13.0 / 11.5 / 10.0
Piping Connections	Liquid Pipe		Φ, mm (inch)	6.35 (1/4")	6.35 (1/4")	6.35 (1/4")	6.35 (1/4")
	Gas Pipe		Φ, mm (inch)	12.7 (1/2")	12.7 (1/2")	12.7 (1/2")	12.7 (1/2")
Refrigerant	Type		-	R410A(Fluorinated greenhouse gas, GWP=2,088)			
Sound	Sound Pressure	H/M/L	dB(A)	34 / 32 / 30	38 / 36 / 34	39 / 37 / 34	43 / 40 / 37
	Sound Power		dB(A)	52	58	59	64
Dimensions	Net Weight		kg	15,5	16	16	16
	Net Dimensions (W×H×D)		mm	720x620x199	720x620x199	720x620x199	720x620x199

Accessories & Controls



Touch Controller	Remote Control (Included)	Touch Controller	DMS2.5	Wi-Fi Kit	External Thermostat	Wired Remote Control
MWR-SH11N	MR-EH00	MCM-A300N	MIM-D01AN	MIM-H04EN	MRW-TA	MWR-WE13N



Learn more about Samsung Climate Solutions at:
www.samsung.com/climate

Copyright © 2020 Samsung Electronics Air Conditioner Europe B.V. All rights reserved. Samsung is a registered trademark of Samsung Electronics Co., Ltd. Specifications and designs are subject to change without notice and may include preliminary information. Non-metric weights and measurements are approximate. All data was deemed correct at the time of creation. Samsung is not liable for errors or omissions. Some images may be digitally altered. All brand, product, service names and logos are trademarks and/or registered trademarks of their respective owners and are hereby recognised and acknowledged.



Samsung Electronics Co., Ltd. participates in the Eurovent Certification Programme (ECP) for Air Conditioners (AC), Variable Refrigerant Flow (VRF) and Liquid Chilling Packages Heat Pump (LCP-HP). To check the ongoing validity of certification, please visit: www.eurovent-certification.com

Samsung Electronics Air Conditioner Europe B.V.
Evert van de Beekstraat 310, 1118 CX Schiphol
P.O. Box 75810, 1118 ZZ Schiphol
+31 (0)8 81 41 61 00
The Netherlands

SAMSUNG